

Lambda DNA/EcoRI Markers

REF G1721

LOT 0000317880

-30°C to -10°C

2023-04-02

Conc. 0.5mg/ml
100µg

Dispensed Lot#: 0000313763

For Laboratory Use

Country of Origin: USA

Promega Corporation
2800 Woods Hollow Road
Madison, WI 53711-5399 USA



PEEL
HERE



ADG1721 00003178808

Certificate of Analysis

Lambda DNA/EcoRI Markers:

| Part No. | Size |
|----------|-------|
| G172A | 100µg |

Description: Lambda DNA/EcoRI Markers are prepared by digesting Lambda DNA to completion with EcoRI followed by heat-inactivation of the enzyme. The DNA fragments are then ethanol-precipitated and resuspended in storage buffer. The six DNA fragments range in size from 3,530 to 21,226 base pairs.

Concentration: 0.5mg/ml.

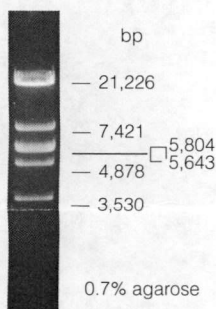
Storage Buffer: Lambda DNA/EcoRI Markers are supplied in 10mM Tris-HCl, 10mM NaCl and 1mM EDTA. Final pH 7.5.

Storage Conditions: Store at -20°C. See the expiration date on the Product Information Label.

Usage Notes:

1. Concentration gradients may form in frozen products and should be dispersed upon thawing. Mix well prior to use.
2. Due to the reannealing of cohesive ends, an extra band may appear above the 21,226bp fragment while 21,226 and 3,530bp bands decrease or disappear. To avoid this annealing, heat the marker at 65°C for 10 minutes in the presence of 1X restriction enzyme buffer, and then immediately chill on ice for 5 minutes before loading onto a gel.

Blue/Orange 6X Loading Dye (G190A): The Blue/Orange 6X Loading Dye supplied with these Markers has a composition of 15% Ficoll® 400, 0.03% Bromophenol Blue, 0.03% Xylene Cyanol FF, 0.4% Orange G, 10mM Tris-HCl (pH 7.5) and 50mM EDTA. This dye is used for loading DNA samples into gel electrophoresis wells and tracking migration during electrophoresis. Recommended usage is one part loading dye for five parts DNA solution. The Xylene Cyanol FF migrates at approximately 4kb, Bromophenol Blue at approximately 300bp and Orange G at approximately 50bp in 0.5% to 1.4% agarose gels in 0.5X TBE buffer (1).



Quality Control Assays

Accurate Sizing: One microgram of the Lambda DNA/EcoRI Marker is mixed with 1X restriction enzyme buffer and Blue/Orange 6X Loading Dye and subjected to electrophoresis in a single lane on a 0.7% agarose gel with TAE 1X buffer. The Lambda DNA/EcoRI Marker must show the expected pattern when compared with a previous lot.

Nuclease Assay: To test for nuclease contamination, one microgram of the Lambda DNA/EcoRI Marker is incubated in 50µl of 1X restriction enzyme buffer for 16 hours at 37°C. Following incubation, the marker is subjected to electrophoresis and visualized on an ethidium bromide-stained agarose gel to confirm the absence of visible degradation.

Reference

1. Sambrook, J., Fritsch, E.F. and Maniatis, T. (1989) *Molecular Cloning: A Laboratory Manual*, Cold Spring Harbor Laboratory, Cold Spring Harbor, NY.

Signed by:

R. Wheeler, Quality Assurance



Promega

Promega Corporation

| | |
|------------------------|-----------------|
| 2800 Woods Hollow Road | |
| Madison, WI 53711-5399 | USA |
| Telephone | 608-274-4330 |
| Toll Free | 800-356-9526 |
| Fax | 608-277-2516 |
| Internet | www.promega.com |

PRODUCT USE LIMITATIONS, WARRANTY, DISCLAIMER

Promega manufactures products for a number of intended uses. Please refer to the product label for the intended use statements for specific products. Promega products contain chemicals which may be harmful if misused. Due care should be exercised with all Promega products to prevent direct human contact.

Each Promega product is shipped with documentation stating specifications and other technical information. Promega products are warranted to meet or exceed the stated specifications. Promega's sole obligation and the customer's sole remedy is limited to replacement of products free of charge in the event products fail to perform as warranted. Promega makes no other warranty of any kind whatsoever, and SPECIFICALLY DISCLAIMS AND EXCLUDES ALL OTHER WARRANTIES OF ANY KIND OR NATURE WHATSOEVER, DIRECTLY OR INDIRECTLY, EXPRESS OR IMPLIED, INCLUDING, WITHOUT LIMITATION, AS TO THE SUITABILITY, PRODUCTIVITY, DURABILITY, FITNESS FOR A PARTICULAR PURPOSE OR USE, MERCHANTABILITY, CONDITION, OR ANY OTHER MATTER WITH RESPECT TO PROMEGA PRODUCTS. In no event shall Promega be liable for claims for any other damages, whether direct, incidental, foreseeable, consequential, or special (including but not limited to loss of use, revenue or profit), whether based upon warranty, contract, tort (including negligence) or strict liability arising in connection with the sale or the failure of Promega products to perform in accordance with the stated specifications.

© 1997, 1998, 2001, 2006, 2009, 2016 Promega Corporation. All Rights Reserved.

Ficoll is a registered trademark of GE Healthcare Bio-sciences.

All specifications are subject to change without prior notice.

Product claims are subject to change. Please contact Promega Technical Services or access the Promega online catalog for the most up-to-date information on Promega products.

Part# 9PIG172
Printed in USA. Revised 12/16