

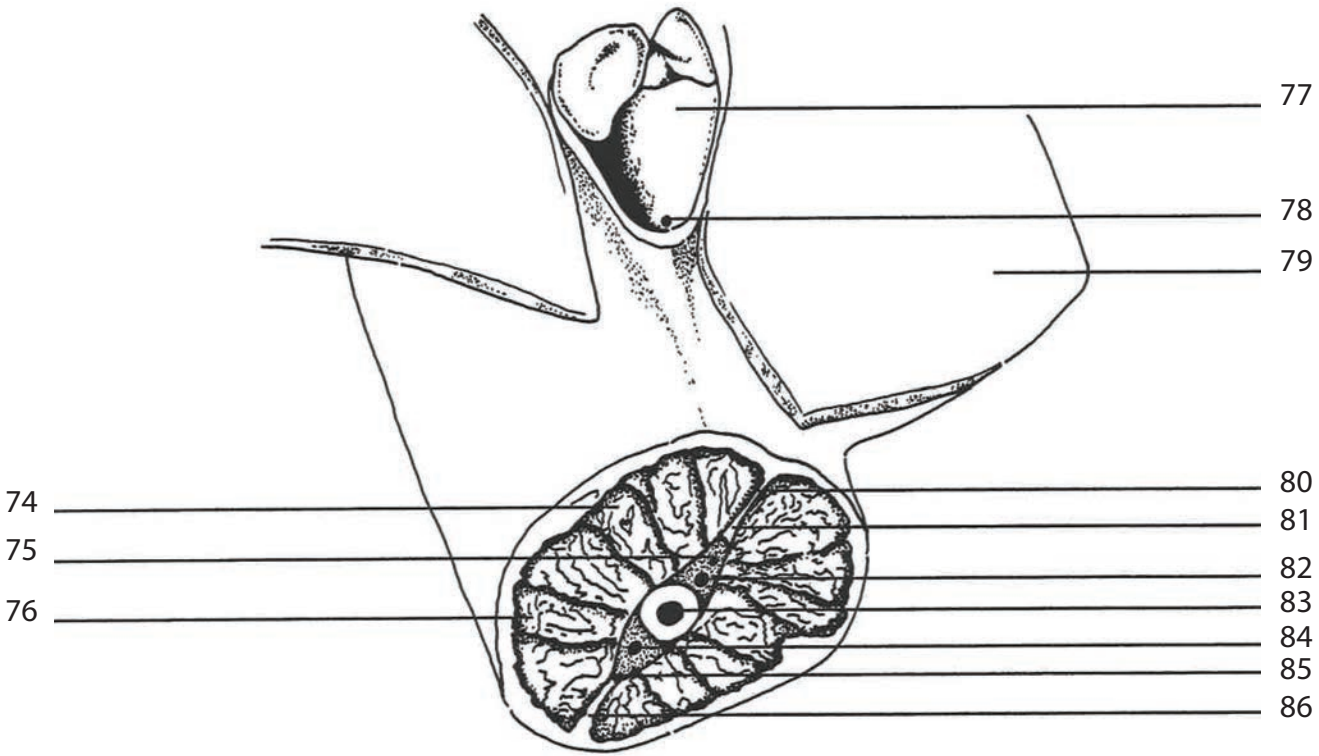
# Ward's Pregnant Dogfish Shark

*Squalus acanthias*

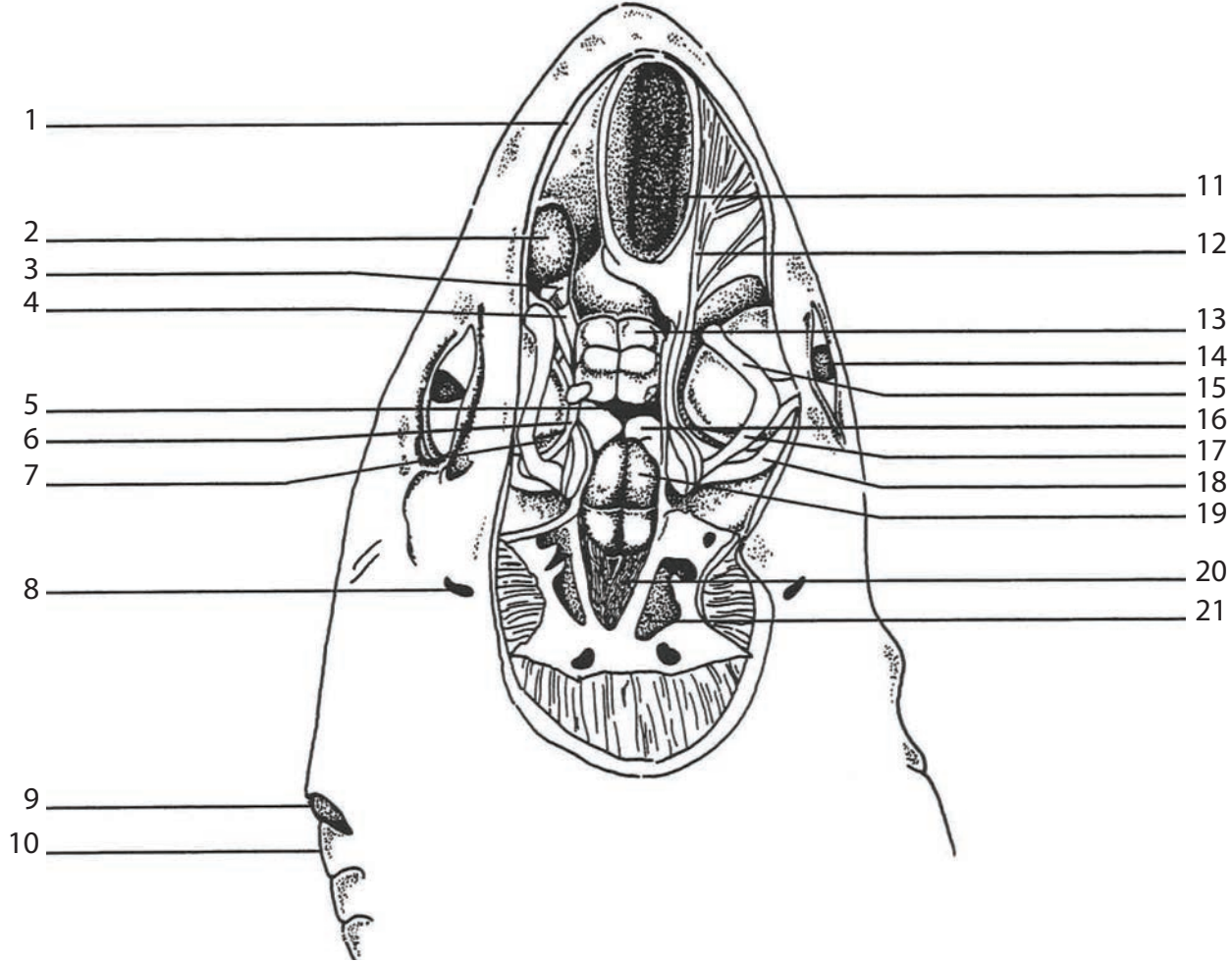
470004-366

## Key to Anatomical Features

### Tail Section (Ventral View)



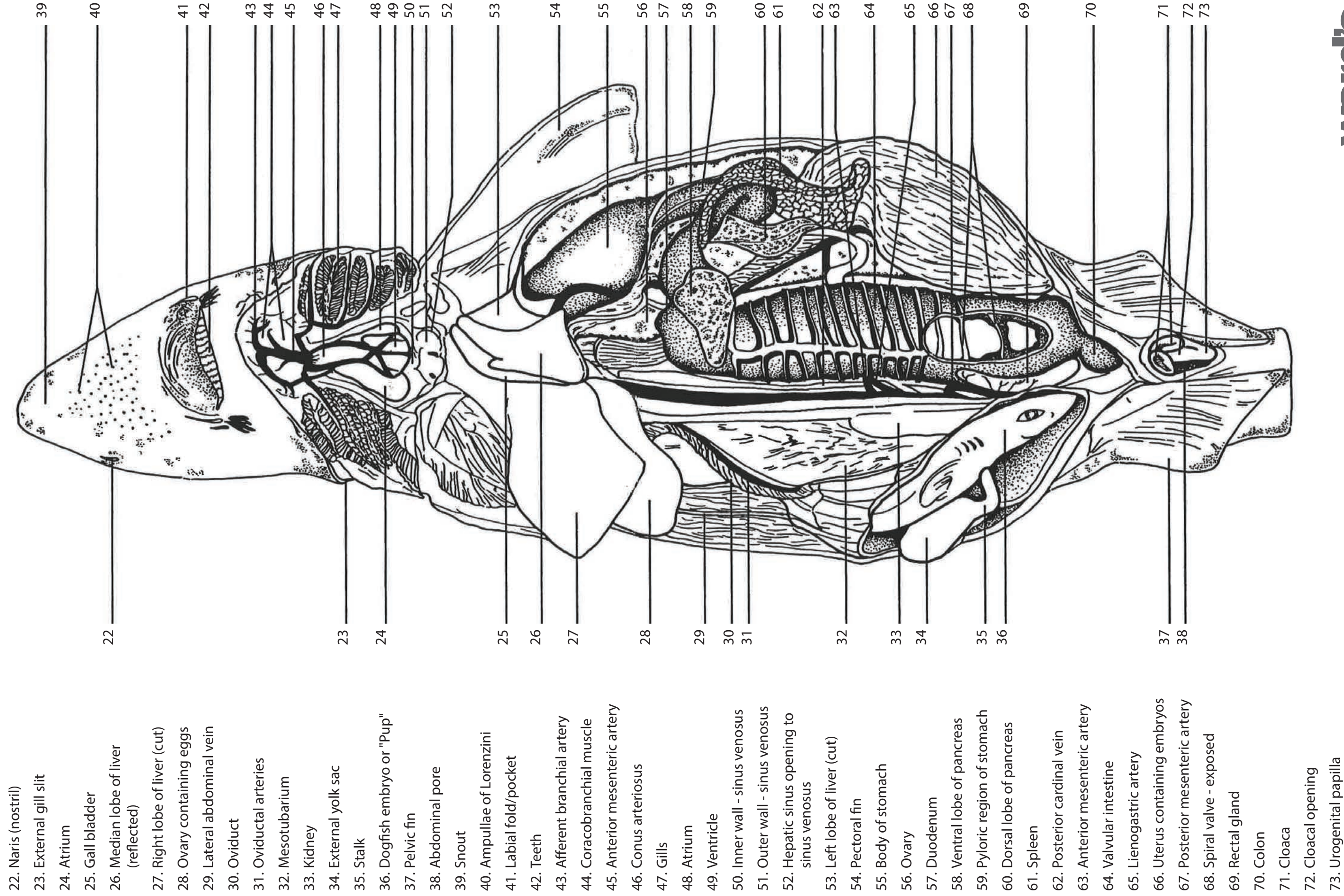
- 74. Ventral longitudinal muscle bundle (hydaxial muscles)
- 75. Caudal vein
- 76. Dorsal longitudinal muscle bundle (epaxial muscle)
- 77. Urogenital pore
- 78. Abdominal pore
- 79. Pelvic fin
- 80. Ventral vertical septum
- 81. Hemal spine
- 82. Caudal artery
- 83. Centrum (vertebral body)
- 84. Spinal cord
- 85. Spinous process
- 86. Dorsal septum



### Brain (Dorsal View)

- |                                 |                                  |                                       |
|---------------------------------|----------------------------------|---------------------------------------|
| 1. Rostral cartilage            | 8. Spiracle                      | 15. Superior oblique muscle           |
| 2. Olfactory sac                | 9. Gill slit                     | 16. Optic lobe                        |
| 3. Olfactory bulb               | 10. Interbranchial Septum        | 17. Superior rectus muscle            |
| 4. Olfactory tract              | 11. Precerebral cavity           | 18. Lateral rectus muscle             |
| 5. Diencephalon (3rd ventricle) | 12. Superficial ophthalmic trunk | 19. Cerebellum                        |
| 6. Median rectus muscle         | 13. Cerebral hemisphere          | 20. 4th Ventricle & medulla oblongata |
| 7. Optic Pedicel                | 14. Eye                          | 21. Otic (ear) capsule                |

## Ventral View



- 22. Naris (nostril) \_\_\_\_\_ 39
- 23. External gill slit \_\_\_\_\_ 40
- 24. Atrium \_\_\_\_\_ 41
- 25. Gall bladder \_\_\_\_\_ 42
- 26. Median lobe of liver (reflected) \_\_\_\_\_ 43
- 27. Right lobe of liver (cut) \_\_\_\_\_ 44
- 28. Ovary containing eggs \_\_\_\_\_ 45
- 29. Lateral abdominal vein \_\_\_\_\_ 46
- 30. Oviduct \_\_\_\_\_ 47
- 31. Oviductal arteries \_\_\_\_\_ 48
- 32. Mesotubarium \_\_\_\_\_ 49
- 33. Kidney \_\_\_\_\_ 50
- 34. External yolk sac \_\_\_\_\_ 51
- 35. Stalk \_\_\_\_\_ 52
- 36. Dogfish embryo or "Pup" \_\_\_\_\_ 53
- 37. Pelvic fin \_\_\_\_\_ 54
- 38. Abdominal pore \_\_\_\_\_ 55
- 39. Snout \_\_\_\_\_ 56
- 40. Ampullae of Lorenzini \_\_\_\_\_ 57
- 41. Labial fold/pocket \_\_\_\_\_ 58
- 42. Teeth \_\_\_\_\_ 59
- 43. Afferent branchial artery \_\_\_\_\_ 60
- 44. Coracobranchial muscle \_\_\_\_\_ 61
- 45. Anterior mesenteric artery \_\_\_\_\_ 62
- 46. Conus arteriosus \_\_\_\_\_ 63
- 47. Gills \_\_\_\_\_ 64
- 48. Atrium \_\_\_\_\_ 65
- 49. Ventricle \_\_\_\_\_ 66
- 50. Inner wall - sinus venosus \_\_\_\_\_ 67
- 51. Outer wall - sinus venosus \_\_\_\_\_ 68
- 52. Hepatic sinus opening to sinus venosus \_\_\_\_\_ 69
- 53. Left lobe of liver (cut) \_\_\_\_\_ 70
- 54. Pectoral fin \_\_\_\_\_ 71
- 55. Body of stomach \_\_\_\_\_ 72
- 56. Ovary \_\_\_\_\_ 73
- 57. Duodenum \_\_\_\_\_
- 58. Ventral lobe of pancreas \_\_\_\_\_
- 59. Pyloric region of stomach \_\_\_\_\_
- 60. Dorsal lobe of pancreas \_\_\_\_\_
- 61. Spleen \_\_\_\_\_
- 62. Posterior cardinal vein \_\_\_\_\_
- 63. Anterior mesenteric artery \_\_\_\_\_
- 64. Valvular intestine \_\_\_\_\_
- 65. Lienogastric artery \_\_\_\_\_
- 66. Uterus containing embryos \_\_\_\_\_
- 67. Posterior mesenteric artery \_\_\_\_\_
- 68. Spiral valve - exposed \_\_\_\_\_
- 69. Rectal gland \_\_\_\_\_
- 70. Colon \_\_\_\_\_
- 71. Cloaca \_\_\_\_\_
- 72. Cloacal opening \_\_\_\_\_
- 73. Urogenital papilla \_\_\_\_\_