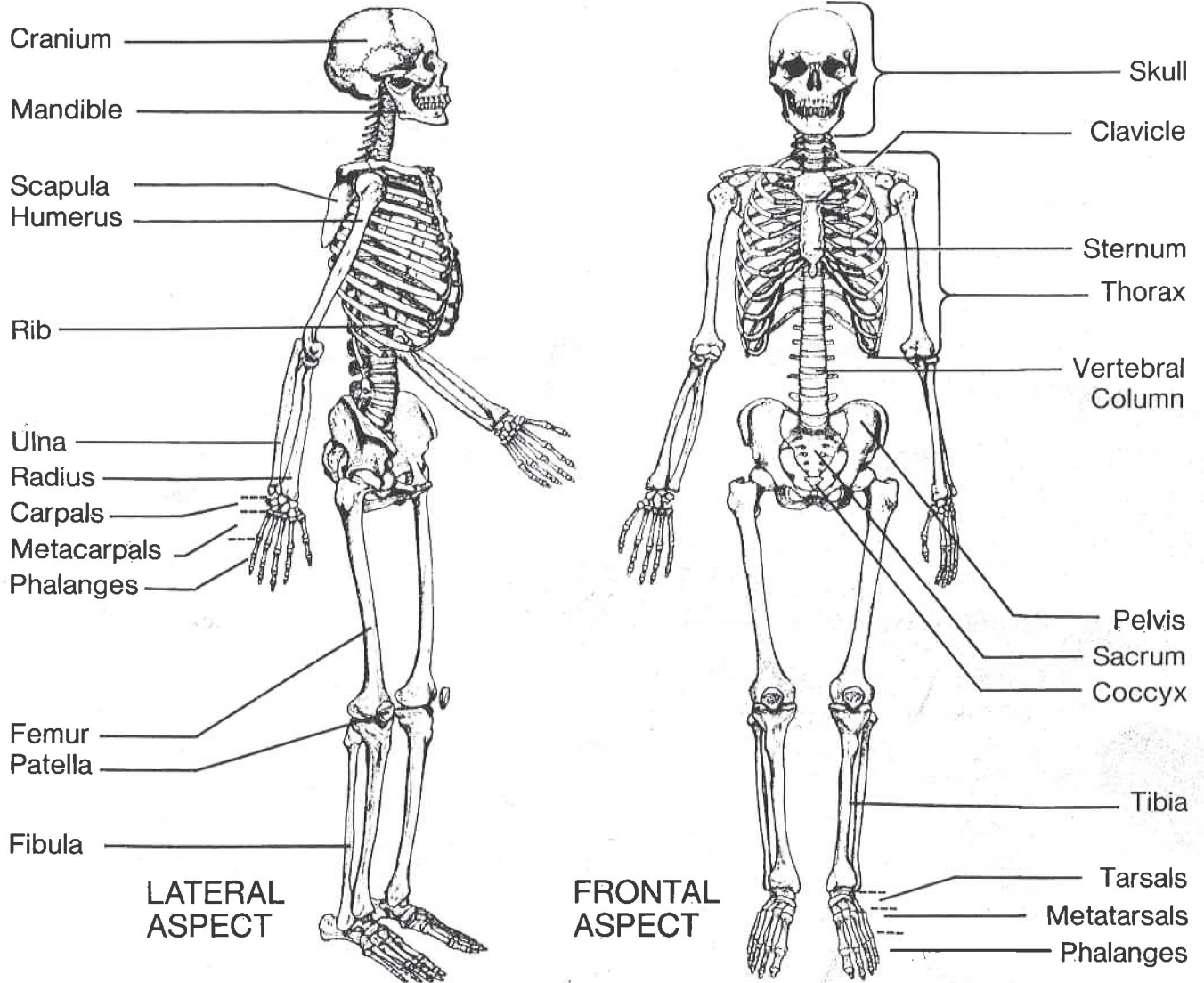


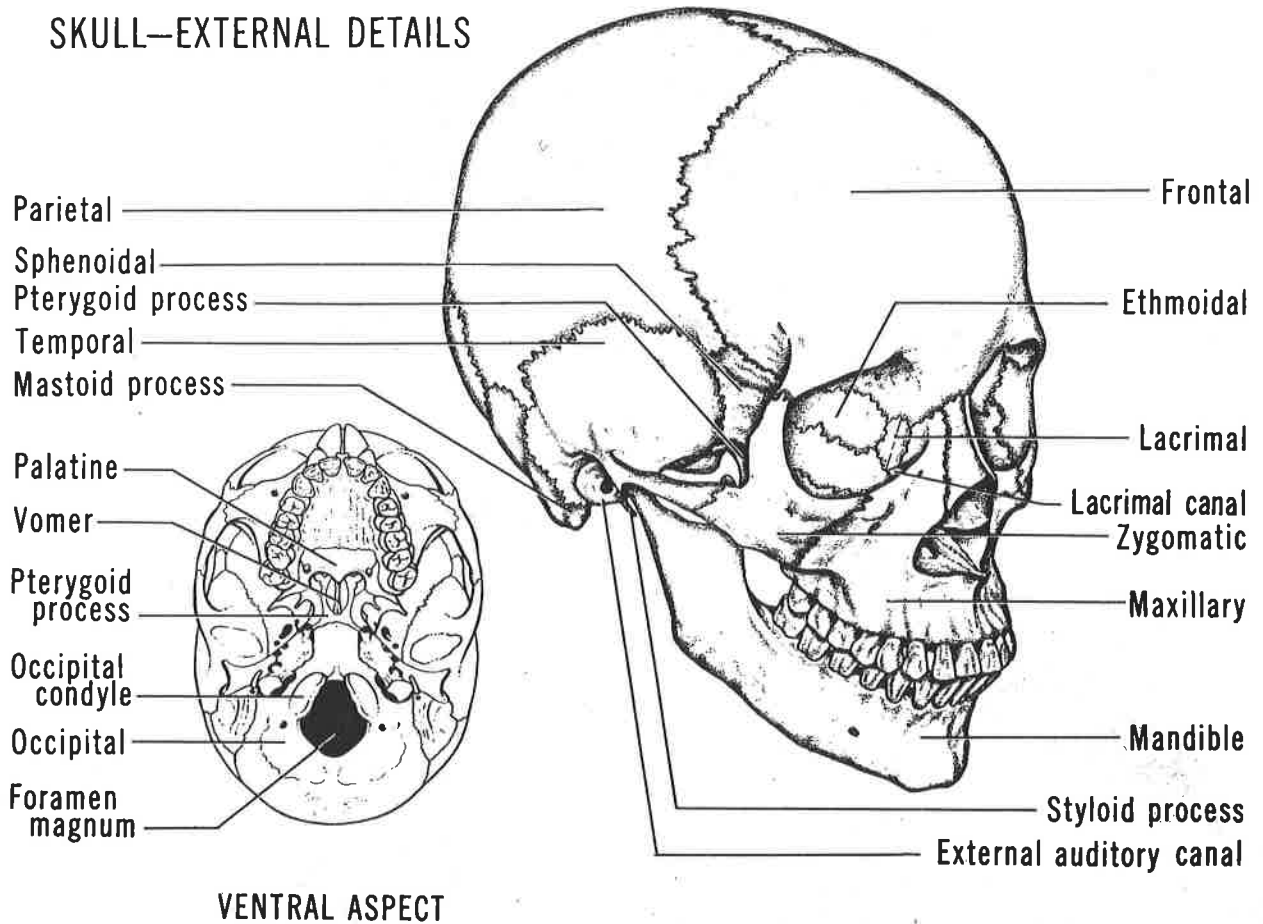
HUMAN OSTEOLOGICAL PREPARATIONS

32-2410

SKELETON - GENERALIZED

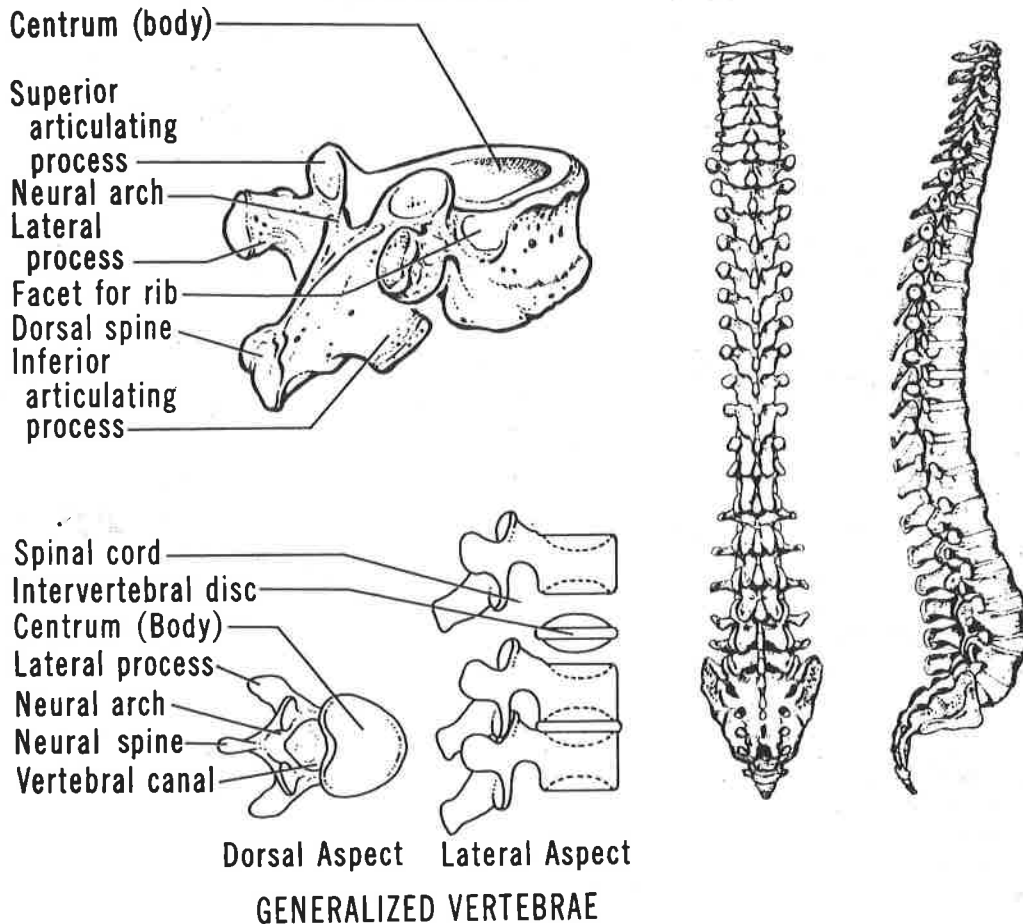


SKULL—EXTERNAL DETAILS



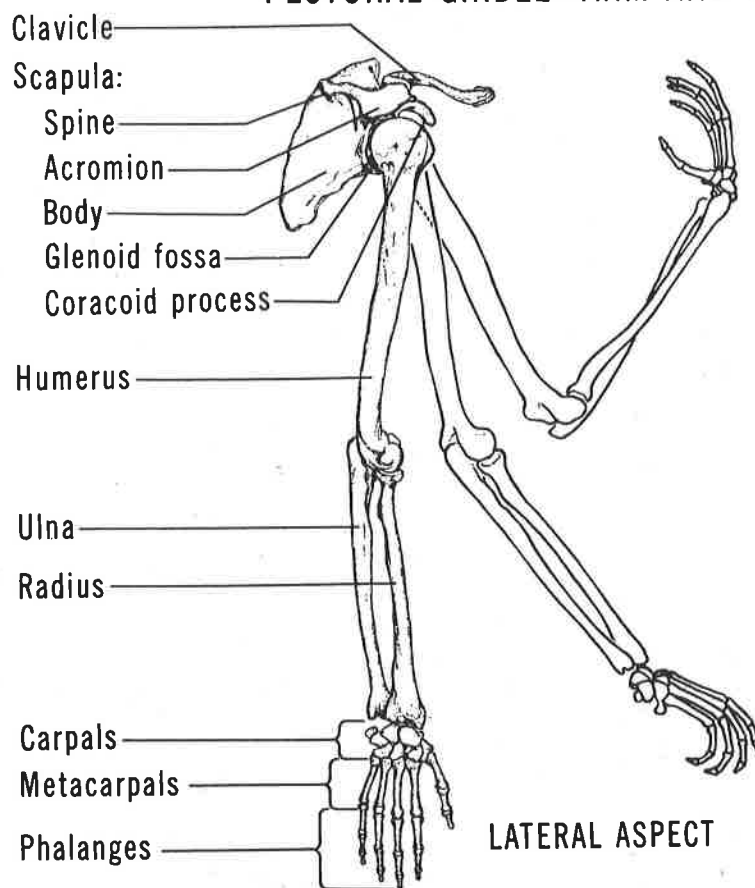
VENTRAL ASPECT

VERTEBRAE AND VERTEBRAL COLUMN

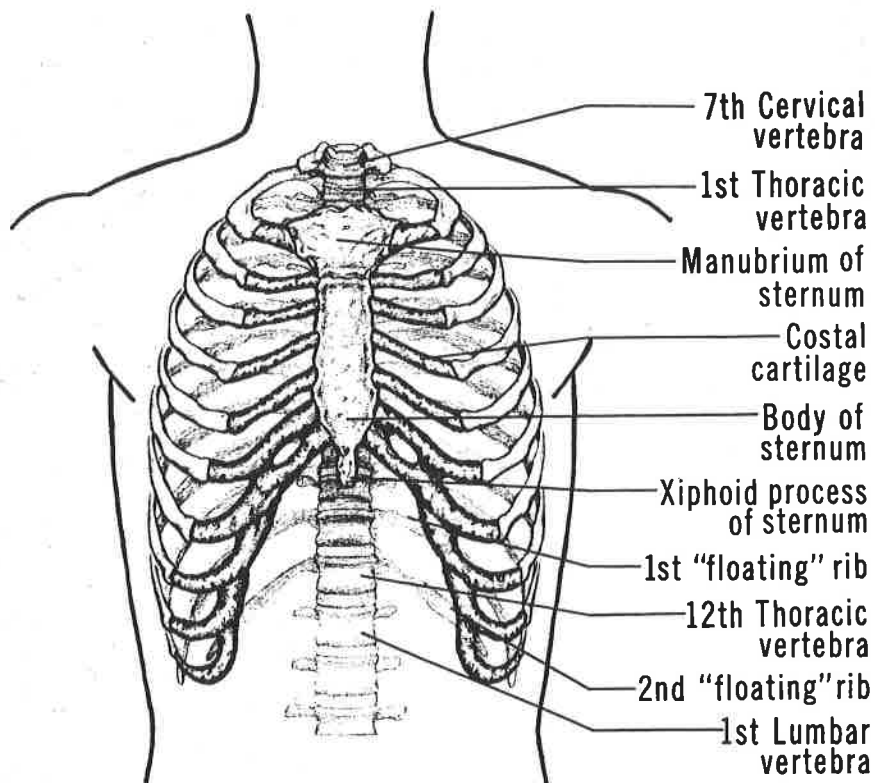
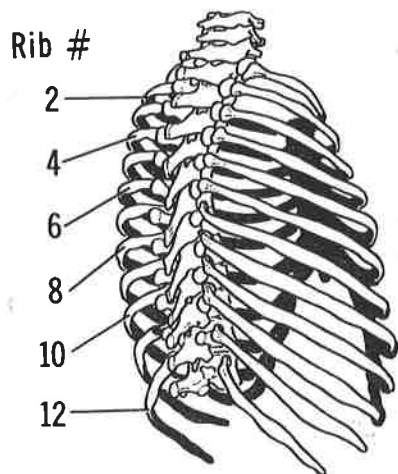


Dorsal Aspect Lateral Aspect
GENERALIZED VERTEBRAE

PECTORAL GIRDLE—ARM AND HAND



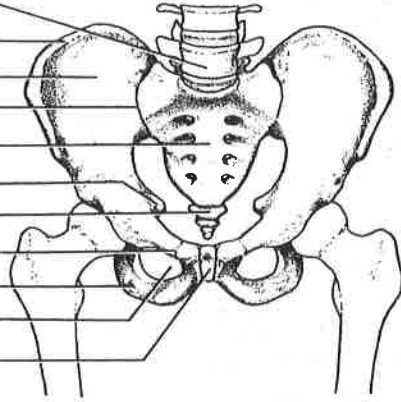
THORAX



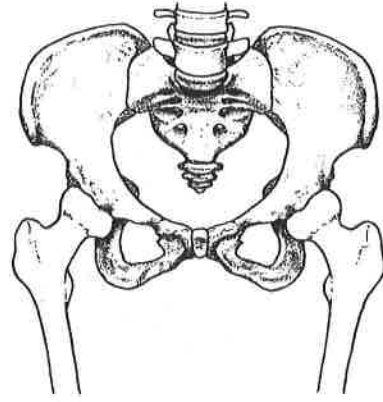
FRONTAL ASPECT

PELVIS—MALE AND FEMALE COMPARISON

- Lumbar Vertebra#5
- Crest of Ilium
- Fossa of Ilium
- Sacroiliac Joint
- Sacrum
- Ischial Spine
- Coccyx
- Pubis
- Ischium
- Obturator Foramen
- Pubic Symphysis (Cartilage)



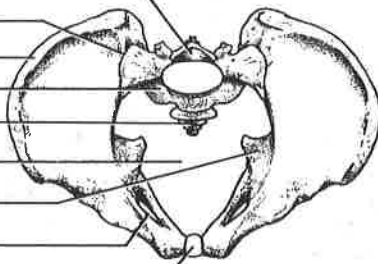
Male



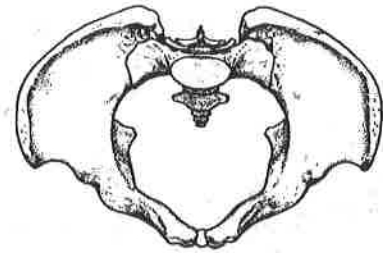
Female

FRONTAL ASPECT

- Neural Canal
- Sacroiliac Joint
- Crest of Ilium
- Sacrum
- Coccyx
- Pelvic Cavity
- Ischial Spine
- Obturator Foramen
- Pubic Symphysis



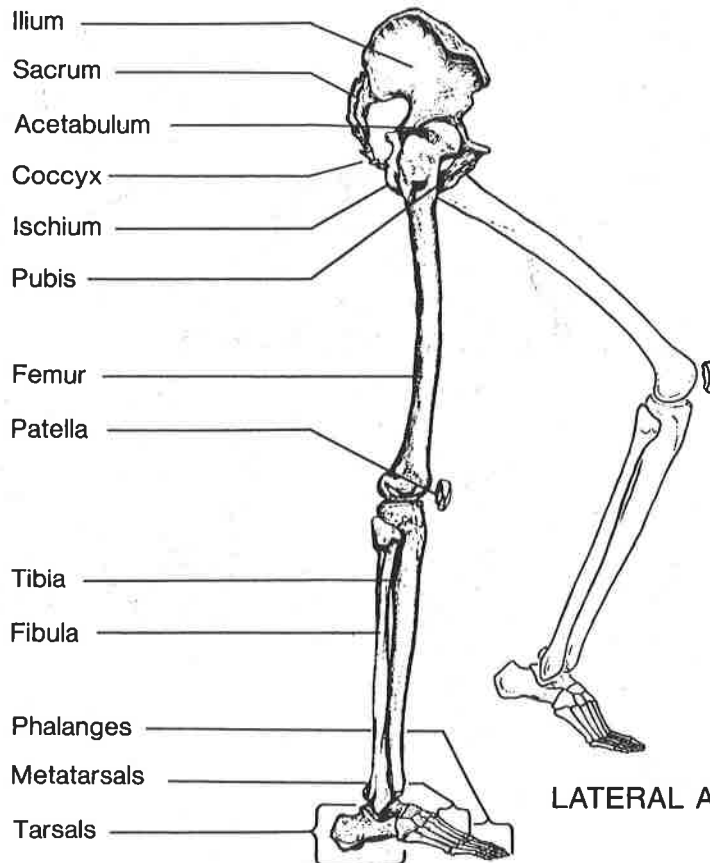
Male



Female

DORSAL ASPECT

PELVIC GIRDLE—LEG AND FOOT



LATERAL ASPECT

- Ilium
- Sacrum
- Acetabulum
- Coccyx
- Ischium
- Pubis
- Femur
- Patella
- Tibia
- Fibula
- Phalanges
- Metatarsals
- Tarsals