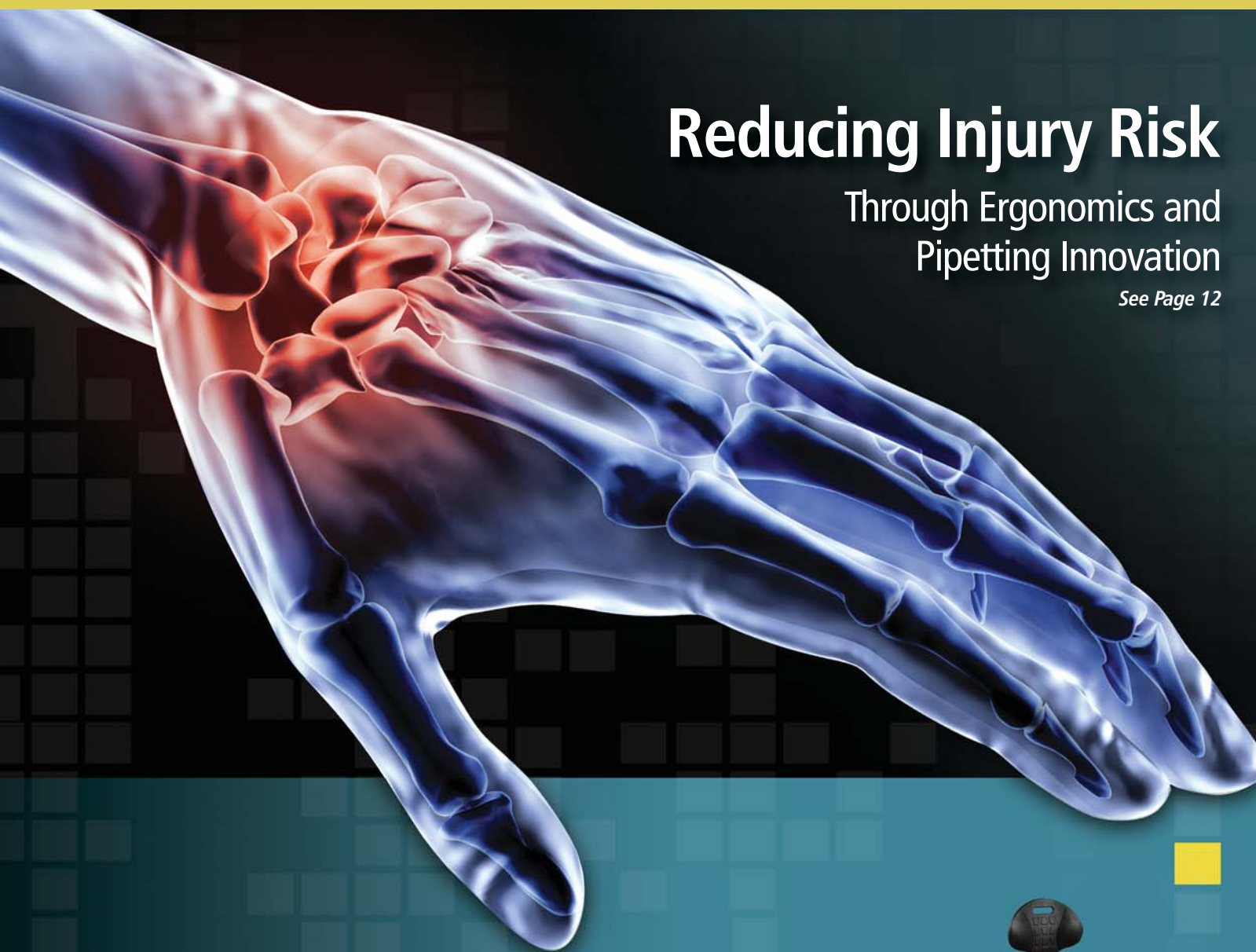


LABVITALS

DELIVERING ESSENTIAL HEALTHCARE SOLUTIONS



Reducing Injury Risk

Through Ergonomics and
Pipetting Innovation

See Page 12

Enhancing the Clinical Lab by
Leveraging Ergonomics, Innovation,
and Environmentally Friendly Products

SEE FEATURED
HEALTHCARE
PRODUCTS INSIDE





When you choose VWR, you gain immediate access to broad product choice from the world's most respected manufacturers. Many products included in this **LABVITALS** issue have been selected because they offer benefits beyond their function. VWR offers technologically advanced, movement-friendly, and environmentally responsible choices that have an immediate impact on your performance in the laboratory, health, and overall productivity.

Look for These Symbols Along with Our Featured Products Inside:



Innovation to Drive Improvements

As the science behind the results continues to evolve, new technologies and products are developed to meet the demanding needs of the clinical lab. VWR works with trusted manufacturers to bring you the latest technology and offers comprehensive product choice to promote greater efficiency in the workplace.



Employ the Principles of Ergonomics to Reduce Workplace Injury

Injuries caused by repetitive motions, as well as poor posture and positioning are serious concerns for all labs. VWR offers many products that help you adopt safe postures, utilize the largest appropriate muscle groups available (where muscular force has to be exerted), and minimize the effort needed when repetitive motion tasks are required.



Choose Environmentally Friendly Products

VWR understands that you have sustainability initiatives, and we're committed to helping you achieve your goals by offering a wide range of products that are safer for the environment and your lab.

This LABVITALS issue includes an article outlining the results of a comprehensive study by U.S. Ergonomics (Sea Cliff, NY), and an article introducing a digital particle analyzer used to objectively interpret agglutination immunoassay tests and RPR titers.

Triangle Biomedical Sciences Waste Removal Systems

DAB/Out™ IHC Waste Removal System

Removes and binds diaminobenzidine (DAB) and other carcinogens from aqueous waste generated by automated immunohistochemistry (IHC) staining instruments. The DAB is contained in the replaceable cartridges and the processed effluent can be safely poured down the drain. Simple hands-off operation reduces exposure and minimizes training time. The Benchtop System is practical for managing waste generated from manual IHC staining. The Large Volume System can process 120L of IHC waste from automated stainers.



89126-880

The FLUOR/Away™ Fluorescent Dye Removal System

Extracts Ethidium bromide and other fluorescent dyes from aqueous solutions, eliminating hazardous liquid waste. It binds more than 99.9% of the Ethidium bromide from a standard solution at a flow rate of 100mL per minute. Handling and personal exposure are kept to a minimum through a sealed container provided for disposal. The benchtop cartridges can process 20L of standard staining solution, and have a maximum binding capacity of 10mg per cartridge. For volumes over 100L, use the Large Volume System.



89126-898



Description	Size, cm (in.)	Cat. No.	Each
DAB/Out IHC Waste Removal Systems			
Large Volume System, 115V	35.5 x 28 x 23 (14 x 11 x 9)	89126-880	2,795.00
Large Volume System, 230V	35.5 x 28 x 23 (14 x 11 x 9)	89126-882	2,795.00
Benchtop System	21 x 16.5 x 30.5 (7 x 6½ x 12)	89126-878	655.00
Cartridge for Large Volume System	5 x 2.5 x 5.5 (13 x 7 x 14)	89126-876	655.00
FLUOR/Away Fluorescent Dye Removal Systems			
Large Volume System, 115V	38 x 38 x 38 (15 x 15 x 15)	89126-898	1,575.00
Large Volume System, 230V	38 x 38 x 38 (15 x 15 x 15)	89126-900	1,575.00
Benchtop System	21 x 16.5 x 30.5 (7 x 6½ x 12)	89126-894	310.00
Cartridge for Benchtop System	3 x 15 x 13 (8 x 6 x 5)	89126-896	225.00

Simport Disposable Dissecting Boards

The DispoCut™ Disposable Dissecting Board is strong yet inexpensive enough to throw away. It is especially developed to provide a clean, safe, and efficient way of handling infectious tissue specimens, and it's two sided so it can be used twice.



- Copolymer resin increases impact and high and low temperature performance
- Ability to be flexed an unlimited number of times without breaking
- Chemically inert
- DispoCut Dissecting Boards can also be sterilized using alcohol, EO gas, or an autoclave (many labs have been autoclaving in excess of three years, most with successful results)



Description	Dimensions, mm (in.)	Cat. No.	Case of
Small	152 x 203 (6 x 8)	89201-984	96/ 411.38
Medium	229 x 305 (9 x 12)	89201-986	48/ 396.06
Large	305 x 483 (12 x 19)	89201-988	24/ 362.14

VWR® Formalin Neutralizing Powder

Efficient and Cost Effective Formalin Neutralizer

Safe, efficient powder is designed to help neutralize spent formalin. Treatment leaves a clear solution that is free from solids and aldehyde odor. Following treatment, formalin can be easily disposed of in a standard drain in accordance with local guidelines. Supplied in convenient packets, simply add one packet per gallon of formalin or 4% glutaraldehyde. Average treatment time is 15 to 20 minutes.



Description	Cat. No.	Case of 10
Formalin Neutralizing Powder	95057-830	108.03

AMRESCO® HistoChoice® Products

HistoChoice Clearing Agent is a non-toxic, non-carcinogenic, and non-flammable replacement for xylene and toluene. It's virtually odorless and non-irritating to human skin. It's designed to work with Isopropanol in automated processors, and is compatible with organic mounting media. It offers faster wax dissolution and slower evaporation than xylene, with no oily residue. And, it can be recycled by distillation.

HistoChoice Mounting Media was designed for use with HistoChoice Clearing Agent, but can also be used as a separate stand-alone medium for standard slide preparation. It works for all types and sizes of specimens, and won't discolor, crack, or splinter with age. It can also be used with immersion oil. The low viscosity of this mounting media means easier application and bubble-free preparations.

HistoChoice Tissue Fixative is safe, non-toxic, and contains no formaldehyde, glutaraldehyde, or mercury. It can be used in sequence with other fixatives, and its preservative characteristics make it more effective than standard formaldehyde-based products, yielding vibrant staining and consistent results, even after long term fixation. It also preserves tissue integrity, eliminating the need for marker recovery procedures. It is versatile and optimal for use in histopathology, cytology, histochemistry, immunochemistry, and molecular pathology.

HistoChoice Dermatology Fixative offers all the features of HistoChoice Tissue Fixative, but is specifically formulated for skin samples.



Description	Size	Cat. No.	Price
Clearing Agent	1L	97060-932	Ea./ 9.50
Mounting Media	120mL	97060-988	Ea./ 24.76
Tissue Fixative	100 cups	97060-958	Cs. 100/ 231.94
Tissue Fixative, Alcohol-Free	100 cups	97060-944	Cs. 100/ 181.30
Dermatology Fixative	100 cups	97060-974	Cs. 100/ 47.25

New Simport CoreDish™ Multi-Compartment Biopsy Containers

Performing a large number of biopsies means an increase in the number of containers handled, and consequently the chance for errors. A new approach was needed in order to increase productivity and reduce waste.

That's why Simport has developed the CoreDish multi-compartment biopsy container. It's in the shape of a dish and half pre-filled with 10% Neutral Buffered Formalin (only 30mL required) for holding and transporting biopsies. It can hold up to 12 biopsies from the same patient, and requires only one I.D. label to be filled out. Containers are supplied with a leakproof screw closure with an O-ring which ensures total protection of contents. With the exception of the general biopsy dishes, each compartment is clearly identified to allow proper placement and visualization.

Conform to OSHA directives.



89137-788



89137-774



89137-782



Container*	No. Compartments	Cat. No.	Case of 10
General Biopsy	5	89137-784	82.28
General Biopsy	8	89137-786	82.41
General Biopsy	12	89137-788	101.24
Breast Biopsy	5	89137-774	82.28
Lower GI Biopsy	12	89137-780	101.24
Upper GI Biopsy	8	89137-778	82.41
Prostate Biopsy	8	89137-776	82.41
Prostate Biopsy	12	89137-782	101.24

*Depth x Diameter: 15 x 95mm (1⁹/₃₂ x 3³/₄ in.)

Integra™ Miltex® Disposable Instruments



BiopBlade® is a sterile, disposable, flexible scalpel for removal of elevated or flat dermal lesions. Ideal for cutaneous surgery such as shave biopsy, saucerization of flat lesions, and leveling of pedunculated lesions.

Our biopsy punches offer the convenience of single-use disposability without sacrificing quality, feel, or performance. Non-plunger-system models are available in ten sizes for a wide range of procedures. Visit vwr.com for plunger-system model options that offer the added benefit of effortless ejection of lodged specimens.

Pre-assembled safety scalpels feature plastic handles, fully retractable stainless steel blades, and comply with OSHA directive for the Needlestick Safety and Prevention Act.

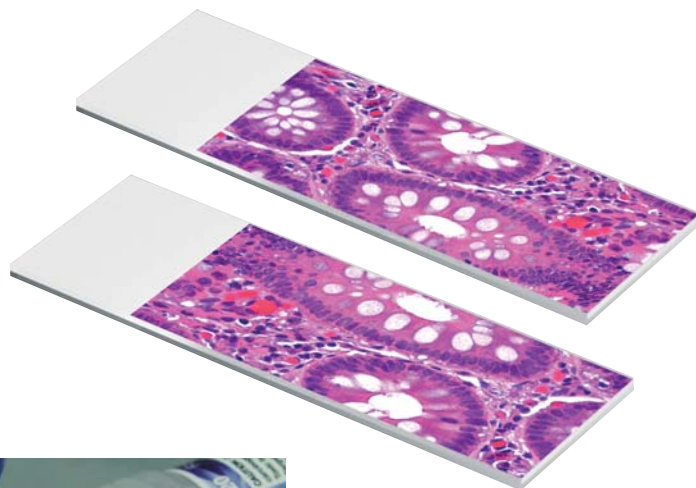
Standard scalpels feature plastic handles and razor-sharp, stainless steel blades for superior cutting and clean incisions.



Description	Cat. No.	Price
BiopBlade, Sterile	95039-086	Pk. 50/ 78.10
Biopsy Punches, Standard Non-Plunger		
1.0mm Diameter	95039-090	Pk. 50/ 108.14
1.5mm Diameter	95039-088	Pk. 50/ 108.14
2.0mm Diameter	21909-132	Pk. 50/ 108.06
2.5mm Diameter	95039-096	Pk. 50/ 108.14
3.0mm Diameter	21909-136	Pk. 50/ 108.06
3.5mm Diameter	21909-138	Pk. 50/ 108.06
4.0mm Diameter	21909-140	Pk. 50/ 108.06
5.0mm Diameter	21909-142	Pk. 50/ 108.06
6.0mm Diameter	21909-144	Pk. 50/ 108.06
8.0mm Diameter	21909-146	Pk. 50/ 108.06
Assorted Sizes (2, 3, 4, 5, & 6mm)	95039-104	Pk. 50/ 108.14
Safety Scalpels		
Stainless Steel, Retractable Blade #10	21909-670	Pk. 10/ 32.82
Stainless Steel, Retractable Blade #11	21909-672	Pk. 10/ 32.82
Stainless Steel, Retractable Blade #15	21909-674	Pk. 10/ 32.82
Stainless Steel, Retractable Blade #15C	95039-116	Pk. 10/ 32.82
Standard Scalpels		
Stainless Steel, Sterile Blade #10	21909-654	Pk. 10/ 18.42
Stainless Steel, Sterile Blade #11	21909-656	Pk. 10/ 18.42
Stainless Steel, Sterile Blade #15	21909-660	Pk. 10/ 17.92
Knife Handle		
No. 3, Stainless Steel 5 in. Graduated in mm and cm. Fits blades 10-15C	21909-540	Ea./ 19.98

Formagel®: New Formalin Fixation Technology

Revolutionizing Tissue Transport



Azer Scientific introduces our new formalin fixation technology, Formagel. This exclusive industry breakthrough will revolutionize tissue transportation and fixation. This advanced tissue fixation gel of 10% neutral buffered formalin preserves and fixes your tissue sample with identical results to standard formalin.

- Reduces risk to personnel during transport
- Fixation results identical to standard 10% neutral buffered formalin
- Decrease safety concerns while maintaining specimen integrity
- Excellent staining results with routine, special, and IHC staining



Formagel Fixative, mL*	Cat. No.	Case of
20	89194-768	128/ 164.18
40	89194-770	50/ 64.59
60	89194-772	50/ 83.05

*Container half filled

VWR® Premium Tissue Cassettes



These premium cassettes feature a fluidic flow design for the optimization of tissue processing and embedding. Unique design has vented side walls to maximize fluid exchange, which results in less carryover and saves reagent. The vented sides and rear wall design work exceptionally well with fatty, dense, and other difficult to process tissue samples. The chamber is 10% longer, allowing for an increased specimen range. Standard 45° angled print surface is compatible with most automatic printing devices. Attached cover has a large labeling area and uses a frangible hinge. Positive release latch and safe lock base allow for ease of opening and closing. Molded of reagent-resistant acetyl polymer resin for chemical resistance to histological solvents.

Thin cassettes have a similar construction but are 50% thinner than standard cassettes. This innovative design maximizes processing efficiency by doubling the number of cassettes that can be processed at once and by halving the storage area required for paraffin blocks. The 33° angled writing surface is not compatible with automatic printing devices.

Stackable cassettes are ideally suited for processing, embedding, and tissue management of multi-specimen cases. The unique stackable format requires only a single cassette cover to be used for an entire stack. When stacking, cassettes snap together for a positive lock.

Ordering Information: Embedding, thin, and stackable cassettes are designed to be used with VWR base molds (see 18000-116 series), sold separately.



Description	Color	Cat. No.	Price
Standard Cassettes	Aqua	18000-004	Pk. 1,000/ 173.35
Standard Cassettes	Fluorescent Green	18000-024	Pk. 1,000/ 170.79
Standard Cassettes	Fluorescent Pink	18000-026	Pk. 1,000/ 173.35
Standard Cassettes	Green	18000-006	Pk. 1,000/ 173.35
Standard Cassettes	White	18000-000	Pk. 1,000/ 173.35
Standard Cassettes	Yellow	18000-016	Pk. 1,000/ 173.35
Thin Cassettes	Lilac	18000-080	Pk. 1,000/ 255.37
Thin Cassettes	Orange	18000-084	Pk. 1,000/ 255.37
Stackable Cassettes	Blue	95029-824	Cs. 1,000/ 156.08
Stackable Cassettes	White	95029-822	Cs. 1,000/ 156.08

VWR® Clinical Containers

HDPE Multipurpose Containers

Translucent containers for the storage of pathology, industrial, and environmental samples. Containers are made of high quality plastic to resist breakage and come in a wide range of sizes. The matching cap snaps on tight for a secure fit.



Capacity	Dimensions, D x H, cm (in.)	Cat. No.	Case of
120mL (4oz.)	7 x 5.7 (2¾ x 2¼)	89009-662	250/ 110.92
250mL (8.5oz.)	8.9 x 6 (3½ x 2¾)	89009-664	250/ 142.16
500mL (16.9oz.)	8.9 x 8.9 (3½ x 3½)	89009-666	100/ 71.35
1L (33.8oz.)	11.4 x 12 (4½ x 4¾)	89009-668	100/ 115.02
2L (67.6oz.)	16.5 x 11.4 (6½ x 4½)	89009-670	50/ 110.53
2.5L (84.5oz.)	16.5 x 16.5 (6½ x 6½)	89009-672	50/ 137.99
4.7L (1.25gal.)	21.6 x 16.5 (8½ x 6½)	89038-282	25/ 62.33
5L (1.3gal.)	22.8 x 16.5 (9 x 6½)	89009-674	25/ 190.55

Specimen Containers with Audible Click Closure

Sterile, straight-sided specimen containers are made of break-resistant polypropylene. The unique polyethylene closure seals with an audible click, assuring superior leak resistance. Closures are tamper-sealed.



Capacity, mL (oz.)	Opening Dimensions, mm (in.)	Cat. No.	Case of 200
90 (3)	48 (1⅞)	15704-002	77.17
120 (4)	48 (1⅞)	15704-008	90.59

Histology Specimen Containers

- Clear, medical-grade polypropylene containers designed for the collection and transport of histology specimens.
- Crack-resistant
- Proof-of-closure system



Description, Color Cap	Cat. No.	Case of 500
Sterile		
Blue	82030-448	181.81
Natural	82030-446	181.81
Orange	82030-450	181.81
Yellow	82030-390	152.17
Nonsterile		
Natural	82030-386	152.17
Yellow	82030-388	152.17

NOTE: All featured products have a capacity of 60mL (2oz.)





Hand Written Labels Are Risky Business

Take the 1st step to reducing medical errors!

Brady offers complete, process-resistant solutions to help eliminate the risks and errors associated w/ poorly or unmarked slides, vials and other testing equipment.



Description	For Use With	Dimensions	Cat. No.	Price
BBP®11 Thermal Transfer Printer	–	–	89125-022	Ea./ 984.33
BMP®71 Label Printer	–	–	89205-008	Ea./ 1,547.34
Black 4300 Series Thermal Transfer Printer Ribbon	BBP11	101.600 mm x 73.760 m (4" x 242')	89125-016	Roll/ 72.21
StainerBondz™ Slide Labels	BBP11	22.860W mm x 22.860H mm (0.900" x 0.900")	89098-182	Roll 2,500/ 200.36
StainerBondz Slide Labels, 1 across	BBP81 and many more*	22.860W mm x 22.860H mm (0.900" x 0.900")	89091-808	Roll 3,000/ 258.41
StainerBondz Slide Labels, 4 across, 1" Core	BBP11	22.860W mm x 22.860H mm (0.900" x 0.900")	89098-188	Roll 2,500/ 200.36

*StainerBondz Slide Label, 1 across (89091-808) also for use with Brady 200MVP Plus, Brady 2461, Brady 300MVP Plus, Brady 300X-Plus II, Brady 3481, Brady 360X-Plus II, Brady 600X-Plus II, Brady 6441, Brady IP, LabXpert, Tagus T200, Tagus T300, Thermal Transfer Printers, TLSPC Link.

Ask your VWR Sales Representative about our wireless network options.



89125-022



89205-008

BRADY
WHEN PERFORMANCE MATTERS MOST™

OSOM® Influenza A & B Test Kits

Get Four Kits for the Price of Three!



The OSOM Influenza A and B Test provides a rapid differential diagnosis of influenza A and B. The testing method is an immunochromatographic assay which uses mouse monoclonal IgG antibodies to Influenza A and/or B nucleoproteins to form a complex with Influenza A and/or B viral antigens. Specimens are collected with a nasal swab, and test results are available in ten minutes. Results are easy to interpret. The test kit maintains a shelf life of 12 months from the date of manufacture, and it should be stored along with the Control Kit at 15 to 30°C (59 to 86°F).

- Two extra test sticks included for external QC testing
- Less than one minute hands on time, results in just 10 minutes
- Room temperature storage

Special Offer

Get Four Influenza A & B Test Kits for the Price Of Three!

Offer valid on kits purchased 8/1/11 through 12/31/11; all three test kits must be purchased on one invoice to qualify. Visit www.vwrsp.com/promotions and enter promo code 3331 in the "FIND" box for redemption details.

SEKISUI
DIAGNOSTICS

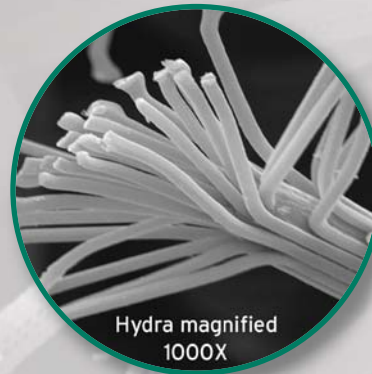
Description	Cat. No.	Each	Case of
Influenza A & B Rapid Test Kit	71001-060	558.69	18/ 7,877.86
Influenza A & B Control Kit	71001-062	86.00	–

Ordering Information: The Rapid Test Kit contains 25 tests. The Control Kit contains five Influenza A positive control swabs and five Influenza B positive control swabs.

Diagnostic Breakthrough in Swabs

Highest Absorption and Fastest Release Ever

At Puritan, we listen. Then we get to work. Our two latest diagnostic swabs are made with sophisticated, multi-length fibers using proprietary manufacturing processes which provide superior collection and release.



HydraFlock®

Designed specifically to provide higher absorption capacity when compared to standard flock swabs. The unique microstructure of Hydra's multi-length fibers are designed to enhance rapid absorption and quick release of biological specimens.



PurFlock® ULTRA

The choice in flock swabs when standard nylon flock doesn't provide the level of collection and release properties you desire, yet HydraFlock's high absorbency levels are not necessary. Ideal swab for various rapid diagnostic tests.



Tip Style, L, mm	Handle, L x D, mm	Tip, L x D, mm	Cat. No.	Pack of 10
HydraFlock Flocked Swabs				
Mini Tip, 153.416	152.4 x 2.489	18.415 x 3.429	89194-874	138.28
Standard Tip, 153.416	152.654 x 2.54	17.526 x 5.08	89194-872	153.85
Large Tip, 153.92	152.654 x 2.54	16.256 x 5.385	89194-870	155.80
PurFlock Ultra Swabs				
Mini Tip, 153.416	152.4 x 2.489	18.415 x 3.429	89194-894	126.38
Standard Tip, 153.416	152.654 x 2.54	17.526 x 5.08	89194-892	129.11
Large Tip, 153.92	152.654 x 2.54	16.256 x 5.385	89194-890	133.23

Featured swabs have sterile and non-sterile options, and additional sizes are available. Visit vwr.com.

Clarity One-Step Immuno Fecal Occult Blood Test, Diagnostic Test Group

This test is a rapid, convenient, odorless assay for the detection of human hemoglobin in feces. Elevated levels of hemoglobin as low as 0.05µg hHb/mL can be detected in as little as five minutes. The test has 98% accuracy, and greater reliability compared to traditional guaiac tests. Contains external controls for built-in QC. No food, vitamin, or iron restrictions. Tests have an 18-month shelf life when stored at room temperature.

- No food or vitamin restrictions
- Increased patient compliance
- Detects human hemoglobin only
- Greater reliability vs. traditional guaiac tests (lower sensitivity 0.5µg hHb/mL)
- Higher reimbursement: A: G0328QW (Colorectal Screening) B: 82274QW (All other ICD-9 indicators)
- 100% Medicare Reimbursement Guarantee
- Free tubes for any unreturned samples - no lost revenue

CLIA waived.



Description	Cat. No.	Unit	Case of
One-Step Immuno Fecal Occult Blood Test Kit, 30 tests	95064-042	Ea. / 195.13	28/ 4,452.26
Accessories			
IFOBT Control, 1mL	95064-014	Pk. 2/ 118.70	24 Pks. / 2,321.25
Patient Take-Home Mailer Kit (Pre-Paid Envelope and Collection Tube)	89171-348	Pk. 50/ 327.00	24/ 6,381.00
Patient Take-Home Mailer Kit (Pre-Paid Envelope Only)	95064-154	Pk. 50/ 25.37	24/ 496.10

VWR® Single-Channel, Ultra High-Performance Variable Volume Pipettors

- Ergonomic, comfortable, and extremely lightweight
- Superior accuracy and precision
- Four-digit volume dial for precision control
- Universal tip fitting with adjustable tip ejector

Ultra high-performance single-channel variable volume pipettors are equipped with a series of ergonomic enhancements not found on traditional pipettor models. An updated soft-touch plunger system ensures surprisingly light aspiration and dispensing forces, while a levered ejection mechanism is designed to provide smooth and gentle tip ejection. The volume adjustment wheel is conveniently located just beneath the plunger button and requires minimal force to select the desired volume. To prevent accidental volume changes, the adjustment wheel can be set to a locked position by pressing it downward.

The pipettor handle is constructed of a high-strength polypropylene polymer that combines excellent chemical resistance with thermal properties to permit autoclave sterilization. The handle permits both left- and right-handed use. A four-digit micrometer allows for fine control over volume adjustment and is located on the palm side of the device, facing the user at all times.

Proven Industry Leader in Ergonomics and Accuracy. Ask your VWR Sales Representative about our Ergonomic Study results.



Ordering Information: Pipettors are supplied with a self calibration tool that, in conjunction with a balance, can be used for basic in-lab calibration. Additionally, all pipettors include color-coded identification tabs, a hanging shelf clip, and a calibration certificate. Starter Kit includes: one of each size 0.5-10µL, 2-20µL, 20-200µL and 100-1,000µL pipettor, four place linear pipettor stand and three racks of corresponding VWR starter tips (10µL, 200µL, and 1,000µL).



Volume, µL	Accuracy	Precision	Cat. No.	Each
Single-Channel Pipettor				
0.1-2	±12.0-1.5%	≤6.0-0.7%	89130-552	315.42
0.5-10	±4.0-0.5%	≤2.8-0.4%	89130-554	315.42
2-20	±3.0-0.8%	≤1.5-0.3%	89130-556	309.87
5-50	±3.0-0.8%	≤2.0-0.4%	89130-558	309.87
10-100	±1.6-0.8%	≤0.8-0.2%	89130-560	309.87
20-200	±1.2-0.6%	≤0.6-0.2%	89130-562	309.87
100-1,000	±0.9-0.6%	≤0.4-0.15%	89130-566	309.87
Starter Kit	—	—	89133-288	1,037.95

New ThermCo® Data Loggers

Thermco's data loggers automatically record specific information, such as temperature and/or humidity in user-selected intervals. All data is recorded in real time. Once activated, a data logger will measure and record from 8,000 up to as many as 64,000 readings.

Eliminate concerns such as how power outages may have impacted your supplies or shipments, whether or not blood products are safe when returned from the OR, or if diagnostic kit components can be saved if left out overnight.

Freeze-tag® Data Logger

Economical temperature monitoring device with a measurement accuracy of ±0.3°C and a shelf life of up to five years. During this period, use the Freeze-tag as often as required as long as the alarm condition has not been violated. Perfect for frost-sensitive shipments such as diagnostics and vaccines.

Fridge-tag® Data Logger

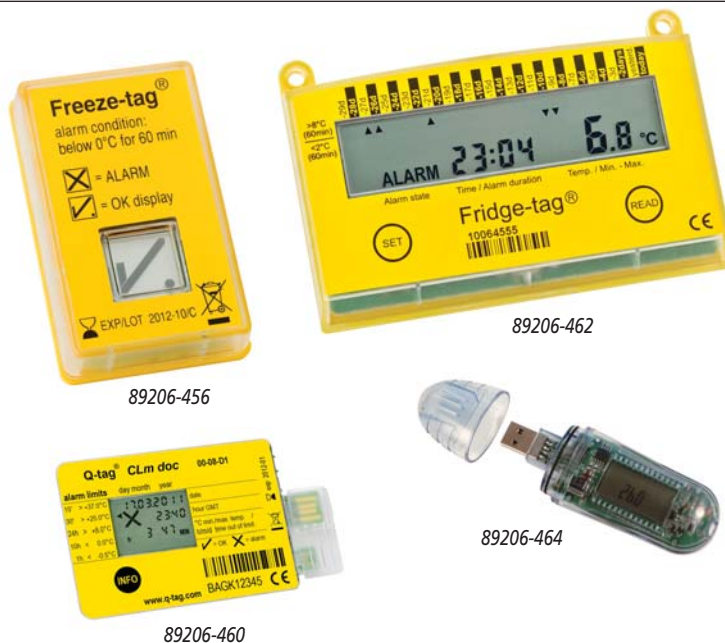
Electronic temperature monitoring of ambient temperatures of sensitive goods during storage, reliably and uninterrupted, inside refrigerators and cold rooms. Monitor that last mile; perfect for blood transport.

MICRO-THERM USB Temperature

Small, rugged and waterproof with LCD display and built-in USB 2.0 connector for monitoring and recording temperature, (-40 to 80°C) This high resolution 16-Bit (0.1°C) logger allows for sample rates of one per second to one per two hours using a long life battery with nanoWatt technology.

Q-tag® CLm/Q-tag® CLm doc Multi-Limit Temperature Indicator

Reliable companion to valuable temperature-sensitive products, this device monitors the entire cold chain. Great for long term storage, vaccines, pharmaceuticals, blood and blood products, perishable food, chemicals, and more. Also available with a USB interface for easy read-out of data.



Data Logger	Cat. No.	Each
Freeze-tag	89206-456	18.00
Fridge-tag	89206-462	79.00
MICRO-THERM USB	89206-464	118.00
Q-tag CLm	89206-458	64.00
Q-tag CLm doc	89206-460	79.00

ASiManager-AT™ for Interpretation of Particle Agglutination Immunoassay Tests and RPR Titers

By: Mike Hyde, Director of Sales, Arlington Scientific, Inc.

The ASiManager-AT™ is intended to be used as an integrated digital particle analyzer to objectively interpret agglutination card tests from Arlington Scientific, Inc. (ASI). The ASiManager-AT combined with ASI test kits, is used to obtain qualitative and semiquantitative results and provide standardized test interpretation, storage, documentation, retrieval, and transmittal of the test results. The ASiManager-AT also delivers an initial predictive titer analysis for the ASI RPR Card Test for Syphilis.

After technologists perform the ASI tests according to the package insert, the ASI cards are then inserted into the device drawer of the ASiManager-AT. The ASiManager-AT interprets the reaction, and the results are displayed as a "REACTIVE", or "NONREACTIVE" result for each individual test (a predictive titer will also be displayed for reactive RPR results).

The ASiManager-AT employs a CCD (charge-coupled device) camera that uses light reflectance to create a highly sensitive and high-resolution image of the agglutination immunoassay. This image is then analyzed by the proprietary software algorithm to interpret the agglutination pattern.

This innovative technology provides a low cost, state-of-the-art, digitally enhanced, integrated system for the objective interpretation of the reliable and proven particle agglutination immunoassay tests.

A comparison of the digital interpretation of the results of testing samples with the ASI RPR Card Test for Syphilis using the ASiManager-AT and visual interpretation by trained laboratory professionals was conducted to show substantial equivalence.

The following data is a composite of the results from five testing sites:

Sample Testing: 5,515 Samples		
Visual Results	ASiManager-AT Digital Results	
	Reactive	Nonreactive
Reactive	2,178	43
Nonreactive	20	3,274

These results yield a sensitivity of 99.1% and a specificity of 98.7%.

The ASiManager-AT is programmed to project or predict the endpoint titer of each qualitative test by reading the undiluted serum (1:1) and determining its corresponding endpoint for reactive serums. This is done using a proprietary algorithm that interprets the reaction in the undiluted sample and projects what the endpoint titer of the sample will be.

The ASiManager-AT is programmed to determine the true endpoint titer of a serial diluted specimen using the RPR endpoint titer function on the instrument. The RPR endpoint



titer (semiquantitative) function analyzes the entire card and identifies in which well the serial diluted sample becomes nonreactive. The software then calculates the endpoint titer.

Initially the primary applications will be for syphilis testing and screening. This technology will support the continued use of the nontreponemal test as recommended by CDC while bringing standardized test interpretation, storage, documentation, retrieval, and transmittal of the test results to this reliable test algorithm (www.cdc.gov/mmwr/preview/mmwrhtml/mm6005a1.htm).

ASiManager-AT	
Analyze	Archive
Standardized Interpretation	Patient Results
Accurate Digital Analysis	Test Images
RPR Titer Evaluations	500 GB Hard Drive
Reduced Subjectivity	Upload to LIS
Retrieve	Benefits
Review Test Images	No Transcription Errors
Review Patient Results	Network/LIS Capable
Reprint Reports	Printable Reports
Data Management	Reduced Eye Fatigue



Description	Cat. No.	Each
ASiManager-AT Digital Agglutination Analyzer*	89206-890	24,995.00

*FDA 510(k) clearance (K111356) for clinical diagnostic testing



ASi™ ARLINGTON SCIENTIFIC, INC.
Solid to the Core

Enjoy Your Work! eLINE® Pipettes

Excellence in Performance & Ergonomics

Biohit eLINE electronic pipettes offer the latest technology and innovation in hand held liquid handling. eLINE are designed to deliver the highest levels of analytical accuracy with minimal effort. Pipette and dispense liquids in comfort.

eLINE Offers:

- Fully electronic operation modes using the DC motor concept
- One touch electronic tip ejection is so easy
- Ergonomic design that suits both left and right handed users

You Save Time and Money

- eLINE electronic pipette is twice as fast as a mechanical pipette
- You need only one pipette instead of two. Biohit eLINE electronic pipette covers the volume range of two mechanical pipettes

Better Results

- eLINE electronic pipettes guarantee more accurate and precise results

User Accuracy

- Less experienced users achieve the same precise results as experienced users

Multifunctional Tool

- eLINE offers a variety of functions, including multi-dispensing and easy programming



Volume Range, μL	Increment, μL	Cat. No.	Each
1 Channel			
0.1 - 5	0.05	89202-224	845.00
0.2 - 10	0.05	89171-638	764.57
5 - 120	0.50	89171-640	764.57
10 - 300	1.00	89171-642	764.57
50 - 1,000	5.00	89171-644	764.57
100 - 5,000	10.00	89171-646	764.57
8 Channels			
0.2 - 10	0.05	89171-648	1,342.99
5 - 120	0.50	89171-650	1,184.96
10 - 300	1.00	89171-652	1,184.96
50 - 1,200	5.00	89171-654	1,342.99
12 Channels			
0.2 - 10	0.05	89171-656	1,478.65
5 - 120	0.50	89171-658	1,421.63
10 - 300	1.00	89171-660	1,330.16
50 - 1,200	5.00	89171-662	1,471.02

Visit www.vwr.com/biohit to watch the eLINE video.

Visit vwr.com or contact your VWR Sales Representative for more information.

EZ-Vision® Visualization Dyes

AMRESCO's Non-Toxic, Non-Mutagenic Alternatives

EZ-Vision DNA Dye

- Convenient solutions to save time
- Instant visualization using standard UV transilluminator
- Safer-to-use alternative to ethidium bromide

RNA EZ-Vision Dye

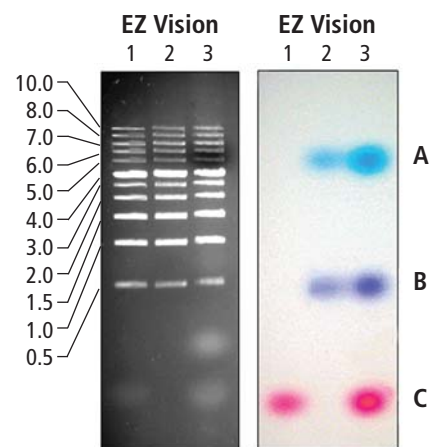
- Ready-to-use solution compatible with downstream applications
- Instant results with no staining or destaining required
- Premixed solution eliminates the use of ethidium bromide

Protein EZ-Vision, 4X

- Fluorescent protein dye eliminates the need for post-staining and destaining
- Instant visualization protein bands with UV illumination
- Compatible with downstream Western Blotting Applications
- Non-toxic, non-mutagenic formula eliminates the need to use methanol



EZ Vision Dye	Size	Cat. No.	Each
DNA Loading Buffer w/One Tracking Dye	5 x 1.0mL	97064-190	115.40
DNA Loading Buffer w/Two Tracking Dye	5 x 1.0mL	97063-268	115.40
DNA Loading Buffer w/Three Tracking Dye	5 x 1.0mL	97063-166	115.40
DNA Ladder, 1kb	600 μL	97063-348	85.00
DNA Ladder, 100bp	300 μL	97063-350	81.00
PCR DNA Marker	500 μL	97063-346	110.00
In-Gel Solution, 10,000X	0.5mL	97064-174	75.00
RNA Loading Buffer	2 x 1.5mL	97064-294	89.00
RNA Ladder, 1,500-9,000 Nucleotides	500 μL	97063-346	110.00
Protein Loading Buffer, 4X	2 x 1mL	97064-328	75.00



A. Xylene Cyanol FF (two)/Patent Blue (three)
B. Bromophenol Blue
C. Amaranth

Electrophoretic Migration of EZ-Vision® One, Two, and Three.

Left image: 1% TAE agarose gel showing the fluorescence of AMRESCO's 1kb Ladder (k181) stained with EZ-Vision Three (lane 3) captured with a Syngene GBox-HR GelDoc System. Right image: Digital camera photograph of the same gel as left image, showing the colors and migration position of the one fast migrating tracking dye of EZ-Vision One (lane 1), the two tracking dyes of EZ-Vision Two (lane 2), and the three tracking dyes of EZ-Vision Three (lane 3).

Reducing Injury Risk Through Superior Laboratory Ergonomics



FOR LABORATORY TECHNICIANS, THE RISK IS REAL

Whether identified as Repetitive Stress Disorder (RSD), Repetitive Stress Injury (RSI) or Cumulative Trauma Disorders (CTD's), musculoskeletal injuries in the workplace have been a serious issue for the past decade, amounting to tens of billions of dollars in costs associated with diagnosis and treatment. In a recent news release summarizing 2009 statistics, the U.S. Department of Labor (DOL), Bureau of Labor Statistics (BLS) reported over 348,740 cases of ergonomically related injuries, which represented over 28% of all cases of workplace injuries and illnesses reported.¹ Furthermore, over 40,000 cases were directly related to hand, wrist, finger and arm RSD's.²

For laboratory technicians, the repetitive nature of standard laboratory techniques, especially pipetting, makes the risk of RSD quite real. In a study published by Bjorksten *et al.*, manual pipetting for more than 300 hours per year increases the risk of hand and shoulder injuries.³ When put in perspective, full-time laboratory technicians who pipette just three hours per day will far exceed the risk factor described in the study. Many RSD's among lab technicians can be traced to the choice of pipettor and the forces required for insertion and ejection of pipette tips.⁴

FLEXFIT™ PROVIDES ERGONOMIC SOLUTION

Through an innovative design approach and a focus on ergonomic solutions, Biotix has developed a new feature called FlexFit. This exclusive feature provides flexibility on the proximal end of pipette tips, reducing the necessary insertion and ejection forces between a pipettor and pipette tip. FlexFit has been incorporated into the Biotix branded line of universal fit pipette tips, and provides not only a better seal, but also improves ergonomics across a broad range of pipettors. In a comprehensive study performed by U.S. Ergonomics (Sea Cliff, NY), an independent testing laboratory, Biotix demonstrated superior ergonomic performance among all products tested. Study data revealed that Biotix tips had the lowest measured forces for application and ejection, had the lowest perceived effort by study participants, and was ranked highest by professional lab technicians as the most preferred pipette tip tested.

ERGONOMIC STUDY DESIGN

Controlled laboratory testing was conducted by certified professional ergonomists at U.S. Ergonomics. Based on the stringency of its testing standards, U.S. Ergonomics is one of the few independent testing laboratories in the United States to provide ergonomic product certification. In this study, eleven lab technicians (3 women, 8 men) who each had been using pipettors for over four years, for an average of up to 3.3 hours per day, were recruited as test subjects. While wired to an electromyography (EMG), **Figure 1**, the test subjects ran through a number of pipetting tasks, including:

- Full Cycle Test – Test subjects completed a series of three full pipetting cycles (apply tip, aspirate, dispense, tip ejection)
- On/Off Test – Test subjects completed a series of 12 applications of the tip followed by tip ejection
- Step-by-step sequence of tip application, aspiration, dispense and tip ejection

For this comprehensive study, five different brands of pipettors and seven different brands of pipette tips were evaluated in two different test groups. In the "Custom" group, brand name tips were paired with their corresponding brand name pipette tips in the force measurements. In the "Generic" group, pipettors and tips were mixed and matched between brands to compare forces among the universal fit tips. Biotix, a universal fit tip, was tested with each pipettor and compared against data from both groups.

STUDY RESULTS

The results of the study showed significant and measurable differences in force exertion, user perceptions, and fatigue potential. Overall, the ergonomic performance of the Biotix tips based on the EMG measurements and the user perception was best

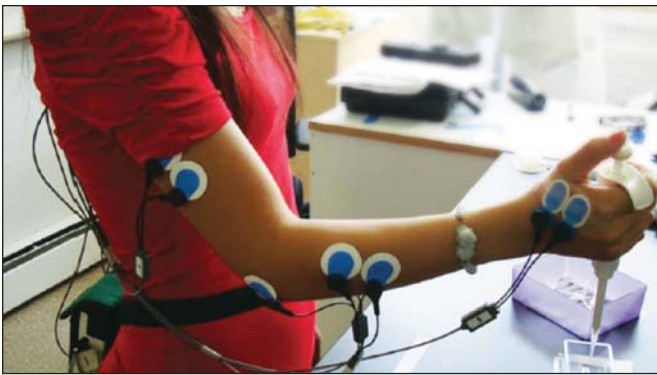


Figure 1: The subject wired to EMG for muscle activity monitoring.

among the tested products. Measurements taken from the EMG recordings clearly demonstrate lower total muscle work overall during a standard pipetting cycle as compared to the custom and generic tip brands.

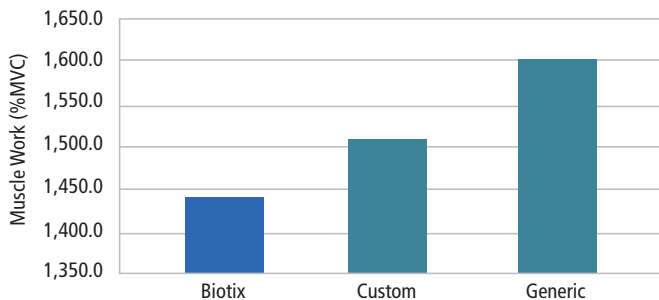


Figure 2: Overall Tip Performance – Total muscle work during pipetting cycle.

SUMMARY

Ergonomic testing indicated significant differences in the factors associated with measured insertion/ejection forces, fatigue potential, and user perceptions. Overall, the ergonomic performance of the Biotix tips was the best among the products tested, **Figure 2**, and was the most preferred among the test subjects. Biotix pipette tips demonstrate ergonomic benefits across a broad range of pipettors, and provide end-users interested in adopting ergonomic programs a greater selection of pipettor choice.



REFERENCES

1. Bureau of Labor Statistics, U.S. Department of Labor, News Release – Workplace Injuries and Illnesses – 2009; Oct. 21, 2010. USDL-10-1451, pg. 2.
2. Bureau of Labor Statistics, U.S. Department of Labor, News Release – Nonfatal Occupational Injuries and Illnesses Requiring Days Away from Work, 2009; Nov 9, 2010. USDL-10-1546, pg. 6.
3. Bjorksten, M., et al: Applied Ergonomics 1994; 25(2): 88-94.
4. Hoskins, D., et al: Laboratory Ergonomics, The Wake-up Call: A Case Study; Chemical Health & Safety Jan/Feb 1998, 5(1), 20- 23, 38.



Introducing...

A BETTER TIP™

Flexfit™

The exclusive flexible nature of the proximal tip end reduces the insertion and ejection forces, allowing for a better fit.

- Decreases the risk of Repetitive Stress Disorder (RSD)
- A better fit for increased precision and accuracy

X-Resin™

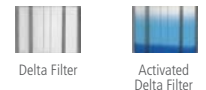
X-Resin is a proprietary resin developed by Biotix. X-Resin is naturally low retentive and does not require any secondary processing.

- Better precision over the competition
- Crystal clarity with low sample retention

Delta Filter™

The exclusive Delta Filter changes color upon contact with liquids or aerosols.

- Superior aerosol protection
- Immediate visual indication that contamination has occurred



Blade™

Blade provides another avenue for increased precision. Blade helps eliminate hanging drops at the distal end of the pipette tip.

- Engineered to prevent need for tip touch-off
- Increases precision and accuracy



Sterile Pipette Tips, Size, µL	Cat. No.	Pack of	Price*
Non-Filtered Manual Tip			
10	89136-570	960	79.14
10 XL	89136-574	960	79.14
200	89136-578	960	79.14
300	89136-566	960	79.14
1,250	89136-586	880	88.75
Filtered Manual Tip			
10	89136-572	960	128.34
10 XL	89136-576	960	128.34
20	89136-582	960	128.34
100	89136-580	960	128.34
300	89136-568	960	128.34
1,250	89136-588	880	138.75

*For a free sample and special pricing details, please contact your VWR Sales Representative.



A Convenient Way to Teach Ergonomics in the Lab and Reduce Injuries

Pipetting is heavy work. No less than 44% of lab professionals suffer from injuries caused by prolonged overuse, pressure, force, or awkward and static postures associated with pipetting.

Over 300 hours of pipetting per year (1.5 hours per day) causes exposure to Repetitive Strain Injury (RSI), a soft tissue disorder affecting muscles, tendons, ligaments, and nerves.

The Biohit Pipetting Academy is your resource for better safety in the lab. The academy offers onsite training as well as a website featuring videos that will guide you through the essentials of laboratory ergonomics.



Training Designed for Your Laboratory
Better Ergonomics, Safety, & Pipetting Results

Who Should Attend?

- Environmental Health and Safety Officers
- Lab Managers
- Lab Technicians

What Will You Learn in the Pipetting Academy?

- Be guided through the essentials of laboratory ergonomics
- Gain a better understanding of the ergonomic risks in laboratory environment and liquid handling in particular
- Learn how to avoid these risks by choosing the most appropriate working postures, liquid handling devices, and accessories
- Get hands-on training to pipetting techniques that will help you and your co-workers get more accurate and precise results in the lab

Visit www.vwr.com/biohit to learn more and register for information.

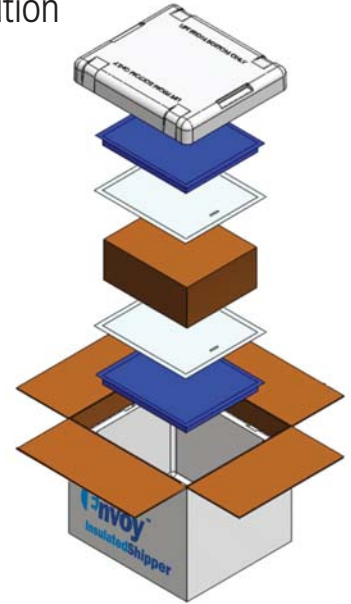
ENROLL TODAY!

ThermoSafe® Envoy Insulated Shippers

A Simple Economical Solution

As the global leader in temperature assurance packaging, ThermoSafe Brands is recognized for its expertise and advanced solutions. At the same time, we realize that our customers require solutions tailored to address the needs of a wide range of shipping conditions.

For that reason, we've applied our engineering expertise to create Envoy™ Insulated Shippers – a simple, economical solution for less complex shipping needs. Perfect for overnight RX, clinical trials, high product value, and international shipping.



Economical

- Compatible to ISTA-5
- Convenient off-the-shelf product with an effective temperature performance
- Moderate shipping conditions, such as express air and controlled temperature distribution lanes
- Re-usable gels are environmentally friendly
- Made with recyclable expanded poly-styrene; ask your VWR Sales Representative for details on our drop-off/mail-to recycling program

Simple

- Simple solution ideal for 1-2 day shipments; keep components between 2-8°C
- Seasonal packouts that are simple to follow and easy to assemble
- Easy to assemble; no guesswork on gels
- Standard components in our most frequently used sizes and configurations



Envoy Shipper	Payload Capacity, L	Payload Dim., W x L x D, in.	Cat. No.	Each
Small Shippers				
Summer, 1-Day	2	7 x 5 x 3	89205-738	20.52
Winter, 1-Day	2	7 x 5 x 3	89205-740	21.56
Summer, 2-Day	4	10½ x 8¾ x 2½	89205-746	25.41
Winter, 2-Day	4	10½ x 8¾ x 2½	89205-748	26.19
Medium Shippers				
Summer, 1-Day	6	10½ x 8¾ x 4	89205-742	36.85
Winter, 1-Day	6	10½ x 8¾ x 4	89205-744	37.11
Summer, 2-Day	7	10½ x 8¾ x 4½	89205-750	39.18
Winter, 2-Day	7	10½ x 8¾ x 4½	89205-752	39.11

Note: 1-Day shippers guaranteed for 30 hours, 2-Day shippers guaranteed for 54 hours

Your Biological Safety Cabinet Should Be Your Fortress

When it comes to safety and protection, Esco biological safety cabinets deliver. Every Esco cabinet is a triumph of engineering – from the ground up and the inside out. With their durable antimicrobial coated heavy gauge sheet metal shells, ULPA filters that are ten times more efficient than the industry average, and a certification program second to none in the industry; Esco cabinets perform, protecting laboratory personnel day in and day out.

Certified in More Countries – Esco LabCulture

The safety solution for life science laboratories is available in 3, 4, 5, and 6ft. models.

Contact your VWR Sales Representative for additional ordering options.



Description	Cat. No.	Each
Biological Safety Cabinet, 4ft.	97015-936	8,943.52
Telescoping Stand w/Leveling Feet, 4ft.	97004-480	809.88



Meet the

The Contaminator™

Reusable containers are one of my favorite places to hang out.



Oh no... Whitney disposable containers. Not again!



They're strong and fight contaminators, like me.



You got me this time – But I'll be back!



Pipet Keeper™
Cat. No. 11214-715
FREE SAMPLE

Test n' Toss™ Disposable
Test Tube Rack
Cat. No. 12000-902
FREE SAMPLE



Large Bench-Top Keeper™
Cat. No. 11214-711
FREE SAMPLE



Safe-Keeper™
Cat. No. 11214-717
FREE SAMPLE

Studies show that many reusable waste containers are contaminated. Isolate the contaminator from your workstation with Whitney Disposable Containers. Contain leaks and spills, and store and transport samples securely with Whitney's stackable, disposable test tube racks.

Try FREE Samples in your lab today!

Visit www.vwrsp.com/promotions and enter promo code 3348 in the "FIND" box to redeem, offer expires 1/31/12.



You'll wonder how you ever managed *biohazard's* without us.™

I love to contaminate!



Berkshire Clinical Laboratory & Healthcare Environment Solutions

Glove Liners

Protect your hands from latex and chemical sensitivity. Wearing glove liners can enhance comfort and reduce perspiration and contact dermatitis associated with long term wearing of latex, vinyl, and nitrile gloves.

- Ambidextrous glove, size-colored cuff for easy stock control
- Regular size fits any hand up to size 9
- Half-finger gloves ideal for retaining maximum dexterity and fingertip sensitivity

32891-470



Size	Cat. No.	Pack of 10 Pairs	Case of 200 Pairs
Nylon Full-Finger Liners			
Large*	14444-320	—	317.64
X-Large*	14444-322	—	317.64
Nylon Half-Finger Liners			
Small*	14444-312	—	282.81
Medium*	14444-314	—	262.18
Polyester Half-Finger Liners			
Regular	32891-470	26.28	371.81
Large	32891-472	25.25	357.25
Polyester Full-Finger Liners			
Regular	32891-474	29.13	411.73
Large	32891-476	27.91	393.38

*Bulk packed

Lab-Tips® Swabs

Lab-Tips Swabs are suitable for applications such as precision cleaning, surface sampling, and validation procedures.

Berkshire offers an extensive range of swabs with high quality and critically clean tips for the healthcare and laboratory setting.



Description	Cat. No.	Pack of 100	Case of
Laundered Knitted Polyester Swabs			
Flex Tip	89137-162	10.07	20/ 201.48
Flex Tip, Double Layer	89137-172	21.90	10/ 218.95
Rigid Tip	89137-164	10.07	20/ 201.04
Rigid Tip, Double Layer	89137-176	30.55	5/ 152.76
Cleanroom Laundered Foam Swabs			
Flex Tip, Long Handle	89137-168	14.30	10/ 143.05
Flex Tip, Small Handle	89137-156	9.15	20/ 182.93
Point	89137-160	12.09	20/ 241.81
Rigid Tip	89137-158	8.92	20/ 178.40
Closed Cell Foam Swabs			
Rigid Tip	89137-174	20.91	5/ 104.55
Nonwoven 100% Polyester Swabs			
Flex Tip	89137-166	9.72	20/ 194.43
Flex Tip, Hydroentangled	89137-170	17.89	10/ 178.92

METTLER TOLEDO

Immediate Results Lasting Value

Whether you are carrying out a simple routine task or a complicated weighing procedure, NewClassic Precision Balances offer a winning combination of strong performance and increase productivity thanks to the fast setting time and consistently reliable results.



Model	Capacity, g	Readability, g	Cat. No.	Each
MS303S	320	0.001	97035-626	2,179.00
MS3002S	3,200	0.01	97035-636	2,340.00
MS6001S	6,200	0.1	97035-646	2,075.00

For our complete offering visit:
www.vwr.com/mettlermssseries

YOUR COMPLIANCE SOLUTIONS



56609-970

SAFETY STORAGE CABINETS



56618-604

POLY ACID & CORROSIVE CABINETS



56609-936

LAB CANS



56609-970

56610-175

POLY WASTE CANS



EAGLE MANUFACTURING COMPANY

Visit vwr.com for more information.



Optimized for Clinical and Cell Culture Labs

Eppendorf® Centrifuges 5702, 5702 R and 5702 RH

The 5702 family of general-purpose centrifuges was especially designed to meet the requirements of low- to mid- throughput clinical and cell culture labs. They are compact in design to fit on almost every lab bench, quiet in operation to improve your work environment, and can be operated with seven different swing-bucket and fixed-angle rotors to accommodate almost any kind of tube.

Centrifuges 5702, 5702 Refrigerated, and 5702 Refrigerated & Heated

- **Capacity:** 4 x 85mL, 30 x vacutainer
- **Speed:** Up to 4,400 rpm (3,000 x g)
- Very compact footprint to fit every lab bench
- Whisper quiet operation to benefit your lab
- Low profile height for easy access to samples
- Parameter lock prevents accidental changes
- Imbalance detection for maximum safety

Temperature Control Versions Also Feature:

- Temperature range from -9°C to 40°C
- Two keys to store routine procedures
- ECO shut-off reduces energy consumption



Broad variety of adapters for blood and cell culture tubes



Aerosol-tight caps for safe centrifugation of hazardous sample



High-capacity fixed-angle rotor for up to 30 x 15mL tubes



eppendorf

Model	Includes	Cat. No.	Each
5702	Without Rotor	47743-472	2,100.00
5702 R	Without Rotor	47745-374	5,150.00
5702 RH	Without Rotor	80076-418	6,080.00
5702	With 4 x 85mL Swing-Bucket Rotor (A-4-38)	97007-362	2,690.00
5702 R	With 4 x 85mL Swing-Bucket Rotor (A-4-38)	97007-364	5,580.00
5702 RH	With 4 x 85mL Swing-Bucket Rotor (A-4-38)	97007-366	6,250.00
Clinical Package			
5702	Centrifuge 5702*	MP022628001	3,450.00
5702 R	Centrifuge 5702 R*	MP022628012	6,150.00
5702 RH	Centrifuge 5702 RH*	MP022628023	6,990.00
Cell Culture Package			
5702	Centrifuge 5702**	MP022628102	3,450.00
5702 R	Centrifuge 5702 R**	MP022628113	6,150.00
5702 RH	Centrifuge 5702 RH**	MP022628124	6,990.00

*Includes a 4 x 85mL swing-bucket rotor with round buckets, four adapters for blood tubes with an outer diameter of 13mm (2 x 022639242), and four adapters for 16mm tubes (2 x 022639269).

**Includes a 4 x 85mL swing-bucket rotor with round buckets, four adapters for 15mL conical tubes (2 x 022639200), and four adapters for 50mL conical tubes (2 x 022639226).

NOTE: All featured products are 120V/60Hz



BioFit Fits. You.

BioFit has the ergonomic furnishing solutions you need for healthcare environments. Ask your VWR Sales Representative about our full line of seating, footrests, tables, and multipurpose carts – all bringing functionality, durability, and style to your lab.

Discover today how BioFit Fits. You.



vwr.com



Description	Seat-Height Adjustment Range, cm (in.)	Cat. No.	Each
Chairs			
Desk Height	38.1-50.8 (15-20)	80086-436	386.56
Medium Bench Height	48.3-66 (19-26)	80086-438	425.42
High Bench Height	48.3-73.7 (19-29)	80086-440	439.08



© 2011 BioFit Engineered Products. All rights reserved.

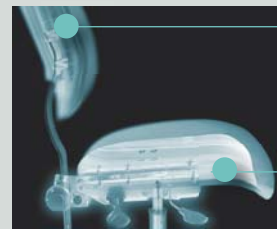
VWR® Contour™ Deluxe Vacuum Formed Chairs



Contoured foam provides durability, comfort, and long life

Seamless style reduces risk of bacterial, and fluid infiltration

Advanced vinyl protects against bacterial and fungal micro-organisms



Back panel is injection molded and 50% thicker for strength, durability, and long wear

- Chair foundations made of furniture-grade plywood
- Highest quality base material
- No holes or gaps
- Super strong
- T-nuts provide a metal-to-metal fastening, no stripping out

There is simply no substitute for a durable, ergonomically correct chair, scientifically designed and independently tested to meet the most demanding standards for use in any environment.

- Ergonomic design provides increased comfort, minimizes fatigue, and maximizes productivity
- Built for durability, long, life and extensive use
- Five-year warranty (lifetime on pneumatic cylinders) ensures your investment for long life
- LEED® compliant, qualify for green building credits
- Meet and/or exceed ANSI/BIFMA standards

These vacuum-formed chairs help protect users from musculo-skeletal disorders and repetitive motion injuries while aiding performance and productivity.



Style	Seat Height Adjustment Range, cm (in.)	Weight, kg (lbs.)	Cat. No.	Each
Desk Height	43.2 - 55.9 (17 - 22)	14.1 (31)	89178-284	509.18
Medium Bench Height	53.3 - 71.1 (21 - 28)	15.9 (35)	89178-286	599.03
High Bench Height	53.3 - 78.7 (21 - 31)	15.9 (35)	89178-288	674.98



VWR Literature Library
C/O ARCHWAY
20770 Westwood Drive
Strongsville, OH 44149
ATTN. POST OFFICE: Forwarding Service Requested

Presorted Standard
U.S. Postage
PAID
Wilkes Barre, PA
Permit No. 681



Prices, product appearance and specifications are current at the time of printing, subject to change without notice. Availability for certain products may be limited by federal, state, provincial or local licensing requirements. VWR makes no claims or warranties concerning sustainable/green products are the sole claims of the manufacturer and not those of VWR International, LLC. All prices are in U.S. Dollars unless otherwise noted. Offers valid in USA only, void where prohibited by law or company policy, while supplies last. Visit vwr.com to view our privacy policy and additional disclaimers.

VWR, forms of VWR, and the VWR logo and/or design are either registered trademarks ©, trademarks ™, or service marks SM of VWR International, LLC in the United States and/or other countries. All other marks referenced herein are registered trademarks, trademarks or service marks of their respective owner(s). For a complete list of trademark owners please visit vwr.com.

©2011 VWR International, LLC. All rights reserved. 1111 20M Lit. No. 92924

VWR Healthcare Clinical Catalog 2012-2014

This 1,000+ page catalog offers broad product choice from the world's most respected manufacturers in the healthcare marketplace with a focus on hospitals, VA hospitals/DOD/public health, teaching hospitals, medical research facilities, independent reference labs, and large physician office laboratories.

- Structured product choice from industry leading suppliers
- Operational excellence backed by the commitment of more than 150 years of distribution
- Differentiated services from the VWR Healthcare Team, **VWRCATALYST™**, and VWR Specialist Teams to support your goals

Visit www.vwr.com/catalogrequest to reserve your copy today!

