

## Certificate of Analysis

### BenchTop 100bp DNA Ladder:

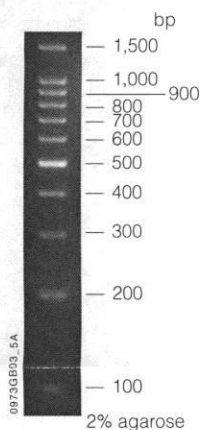
Part No.	Size
G829A	60µl (10 lanes)
G829B	300µl (50 lanes)

**Description:** The BenchTop 100bp DNA Ladder (Cat.# G8291, G8292) is ideal for determining the size of double-stranded DNA from 100–1,500 base pairs. The ladder consists of 11 double-stranded DNA fragments with sizes of 100, 200, 300, 400, 500, 600, 700, 800, 900, 1,000 and 1,500bp. The 500bp band is present at triple the intensity of the other fragments and serves as a reference indicator. All other fragments appear with equal intensity on the gel. The recommended loading volume is 6µl/lane.

**Storage Buffer:** The BenchTop 100bp DNA Ladder is supplied in 1X Blue/Orange Loading Dye.

**Storage Conditions:** See the Product Information Label for storage recommendations.

**Usage Note:** Concentration gradients may form in products and should be dispersed; mix well prior to use. When the product is subjected to electrophoresis in an agarose gel, the three dyes in the BenchTop Markers migrate at various speeds. The xylene cyanol FF migrates at approximately 4kb, bromophenol blue at approximately 300bp and orange G at approximately 50bp in 0.5–1.4% agarose gels in 1X TAE buffer (1).



### Quality Control Assay

**Accurate Sizing:** Six microliters of the BenchTop 100bp DNA Ladder is subjected to electrophoresis in a single lane on a 2% agarose gel with 1X TAE buffer. The markers must show the expected pattern when compared to Promega's conventional 100bp DNA Ladder (Cat.# G2101).

### Reference

1. Sambrook, J., Fritsch, E.F. and Maniatis, T. (1989) *Molecular Cloning: A Laboratory Manual*, Cold Spring Harbor Laboratory, Cold Spring Harbor, NY.

Signed by:

J. Stevens

J. Stevens, Quality Assurance

### BenchTop 100bp DNA Ladder

REF G8291 LOT 0000218455  
-30°C +30°C 2018-07-26  
300µl Dispensed Lot#: 0000215964

For Laboratory Use

Country of Origin: CHN  
CHN: G829B

Promega Corporation  
2800 Woods Hollow Road  
Madison, WI 53711-5399 USA



ADG8291 00002184559

PEEL HERE



## Promega

### Promega Corporation

2800 Woods Hollow Road	
Madison, WI 53711-5399	USA
Telephone	608-274-4330
Toll Free	800-356-9526
Fax	608-277-2516
Internet	<a href="http://www.promega.com">www.promega.com</a>

### PRODUCT USE LIMITATIONS, WARRANTY, DISCLAIMER

Promega manufactures products for a number of intended uses. Please refer to the product label for the intended use statements for specific products. Promega products contain chemicals which may be harmful if misused. Due care should be exercised with all Promega products to prevent direct human contact.

Each Promega product is shipped with documentation stating specifications and other technical information. Promega products are warranted to meet or exceed the stated specifications. Promega's sole obligation and the customer's sole remedy is limited to replacement of products free of charge in the event products fail to perform as warranted. Promega makes no other warranty of any kind whatsoever, and SPECIFICALLY DISCLAIMS AND EXCLUDES ALL OTHER WARRANTIES OF ANY KIND OR NATURE WHATSOEVER, DIRECTLY OR INDIRECTLY, EXPRESS OR IMPLIED, INCLUDING, WITHOUT LIMITATION, AS TO THE SUITABILITY, PRODUCTIVITY, DURABILITY, FITNESS FOR A PARTICULAR PURPOSE OR USE, MERCHANTABILITY, CONDITION, OR ANY OTHER MATTER WITH RESPECT TO PROMEGA PRODUCTS. In no event shall Promega be liable for claims for any other damages, whether direct, incidental, foreseeable, consequential, or special (including but not limited to loss of use, revenue or profit), whether based upon warranty, contract, tort (including negligence) or strict liability arising in connection with the sale or the failure of Promega products to perform in accordance with the stated specifications.

© 2004, 2005, 2009, 2015 Promega Corporation. All Rights Reserved.

All specifications are subject to change without prior notice.

Product claims are subject to change. Please contact Promega Technical Services or access the Promega online catalog for the most up-to-date information on Promega products.

Part# 9PIG829  
Printed in USA. Revised 2/15