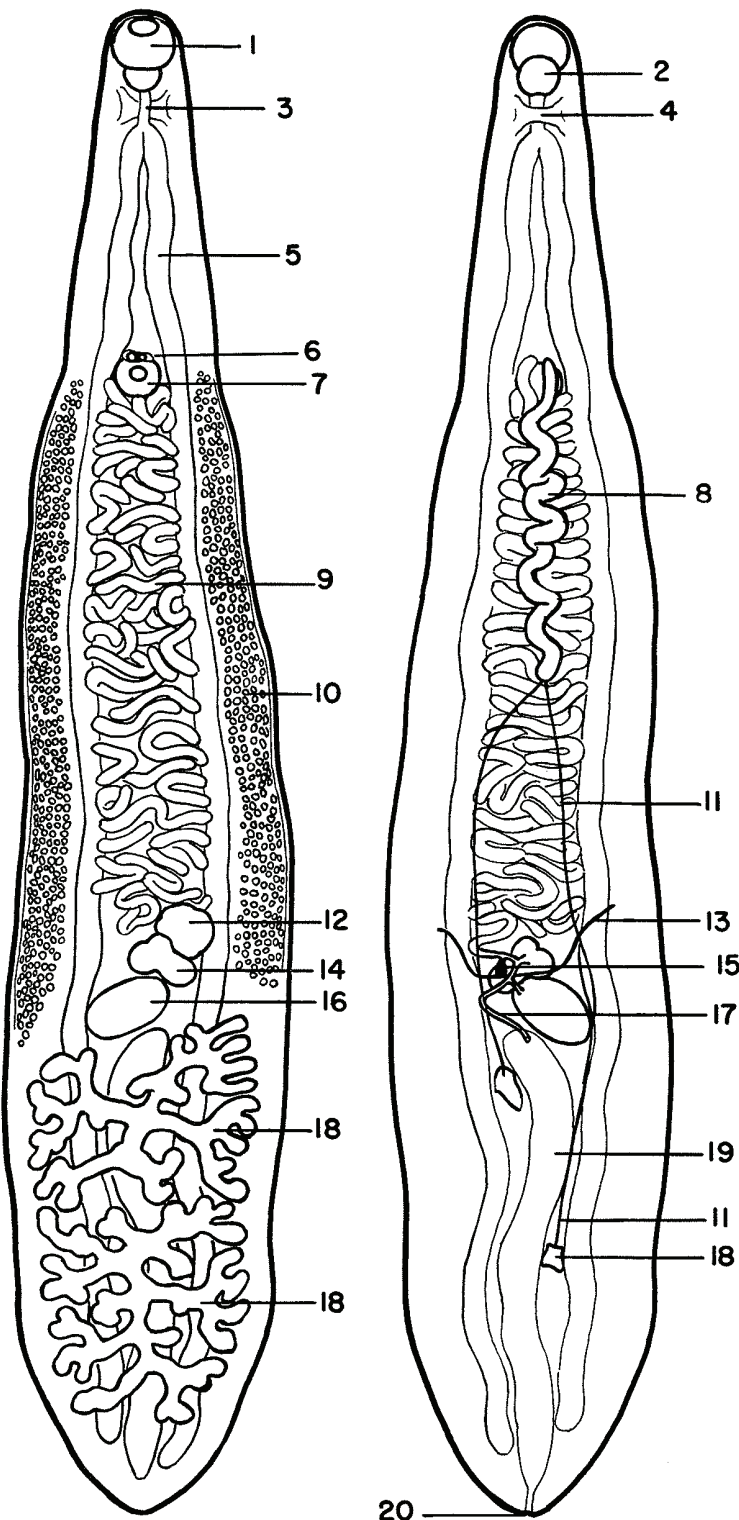


Ward's *Clonorchis sinensis* Model

470029-432



1. Oral sucker
2. Pharynx
3. Esophagus
4. Brain
5. Intestinal crura
6. Genital pore
7. Acetabulum
8. Seminal vesicle
9. Uterus
10. Vitellaria
11. Vasa efferentia
12. Shell gland or Mehlis's gland
13. Transverse yolk duct
14. Ovary
15. Yolk reservoir
16. Seminal receptacle
17. Laurer's canal
18. Testes
19. Excretory bladder
20. Excretory pore