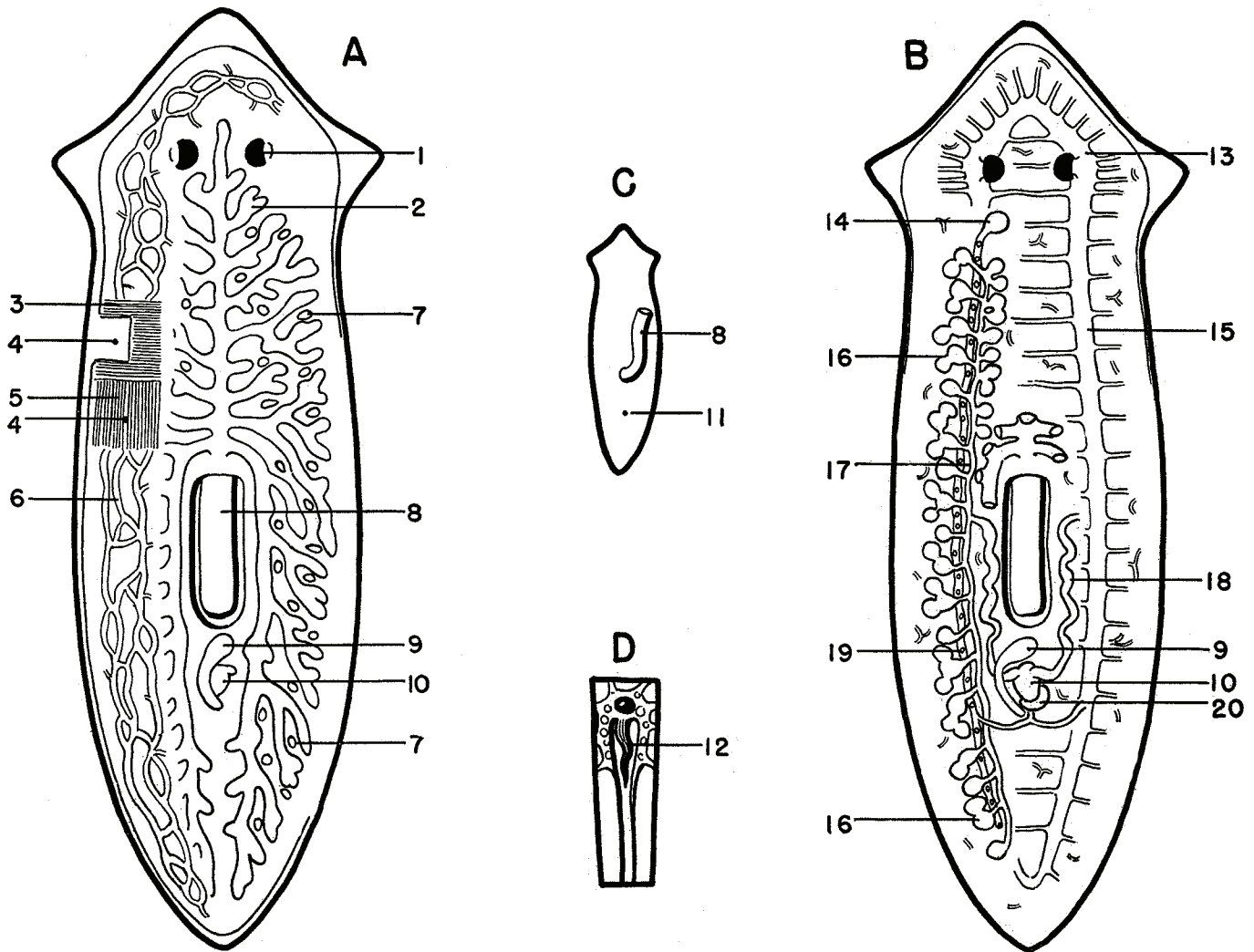


Ward's Planaria Model

470029-430



- A. dorsal dissection to level of excretory and digestive systems.
 B. dorsal dissection to level of reproductive and nervous systems.
 C. ventral view of worm showing extruded pharynx and genital pore.
 D. a single flame cell, greatly enlarged: (these lie at the ends of the finest branches of the excretory tubules, scattered throughout the body).

- | | | |
|--|-------------------------------|--|
| 1. eye | 8. pharynx | 16. testes |
| 2. digestive system | 9. copulatory sac | 17. vas deferens |
| 3. transverse muscle layer | 10. cirrus sac | 18. seminal vesicles |
| 4. excretory pores, only two of many are shown | 11. genital pore | 19. oviduct with stumps of vitellaria, see 7 |
| 5. longitudinal muscle layer | 12. "flame" - pencil of cilia | 20. genital atrium |
| 6. excretory system | 13. brain | |
| 7. vitellaria | 14. ovary | |
| | 15. nerve cord | |