

# Millipede Activities

## Vocabulary and Labeling



## Vocabulary

Fill in the blanks.

**arthropod** - an invertebrate animal with an outer skeleton, body segments, and legs with joints. Examples include spiders, crabs, butterflies, and millipedes.

**exoskeleton** - an outer skeleton that supports and protects the body.

**segment** - a repeated unit; in millipedes, most segments have two pairs of legs.

**terrarium** - a glass or plastic container for growing plants or animals.

**pesticides** - chemicals that are applied to plants to remove insects.

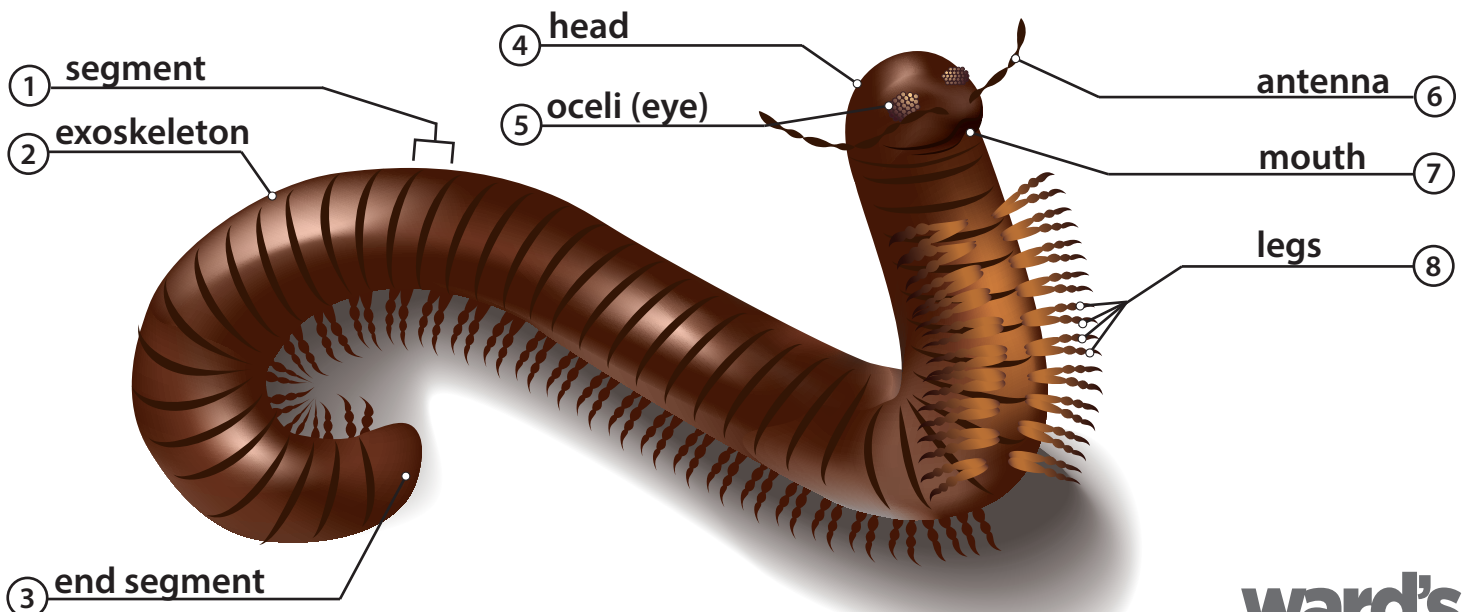
**decomposer** - an organism that feeds on rotting leaves and vegetation.

**nymph** - immature form of insect or arthropod; resembles adult in structure.

## Labeling

Can you label the body parts on the millipede? Fill in the blanks below with the words in the word bank.

antenna	end segment	exoskeleton	head
legs	mouth	oceli (eye)	segment



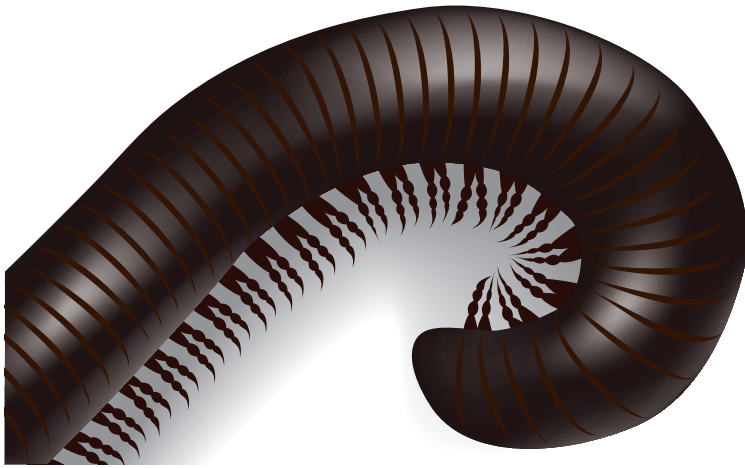
# Millipede Activities

## Observe and Research

### Observe

---

How many legs does a millipede have? Use math to count segments and legs. Find out how many legs *your* millipede has. They add segments as they grow, and each new segment adds legs.



<b>My Millipede</b>
segments = _____
legs = <u>          (4 legs per segment)          </u>

### Research

---

How are millipedes and centipedes different? Research both animals by reading and looking at pictures. Write facts you discover about each below.

#### Millipedes

rounded body \_\_\_\_\_

slow walkers \_\_\_\_\_

detritivores, decomposers \_\_\_\_\_

do not sting \_\_\_\_\_

2 pairs of legs on most segments \_\_\_\_\_

legs attached to bottom of body \_\_\_\_\_

burrowers \_\_\_\_\_

\_\_\_\_\_

\_\_\_\_\_

vs.

#### Centipedes

flat body \_\_\_\_\_

fast runners \_\_\_\_\_

carnivores \_\_\_\_\_

have modified legs with venom \_\_\_\_\_

1 pair of legs per segment \_\_\_\_\_

legs attached to sides of body \_\_\_\_\_

live in cracks, crevices, under logs \_\_\_\_\_

\_\_\_\_\_

\_\_\_\_\_