

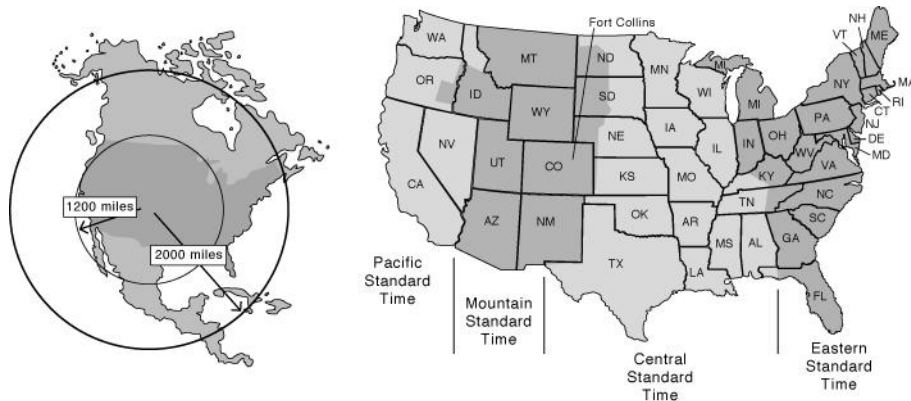
## MULTIFUNCTION JUMBO WALL CLOCK - INSTRUCTIONS

### Jumbo Atomic Wall Clock with Thermometer

This radio controlled clock is an extremely accurate timepiece. It can receive the time signal transmitted by the National Institute of Standards and Technology (NIST), which is regulated by 3 atomic clocks and deviates less than 1 second within 3,000 years. The NIST broadcasts the time signal (WWVB, 60kHz) continuously from Fort Collins, Colorado. This signal can be received anywhere in the continental USA and Canada that long wave (AM) radio reception is possible with a portable radio. It is expected that the signal can cover a distance of over 2,000 miles from the transmitter. Therefore, your clock will receive the signal within the broadcast range anywhere an AM signal can be received; generally the signal cannot be picked up in massive metal and concrete structures unless near a window. In addition, some environmental effects (see next page) may affect the transmitting distance.

For more information, please study the WWVB WEB page of NIST at:

<http://www.boulder.nist.gov/timefreq/>



### Environmental Reception Effects

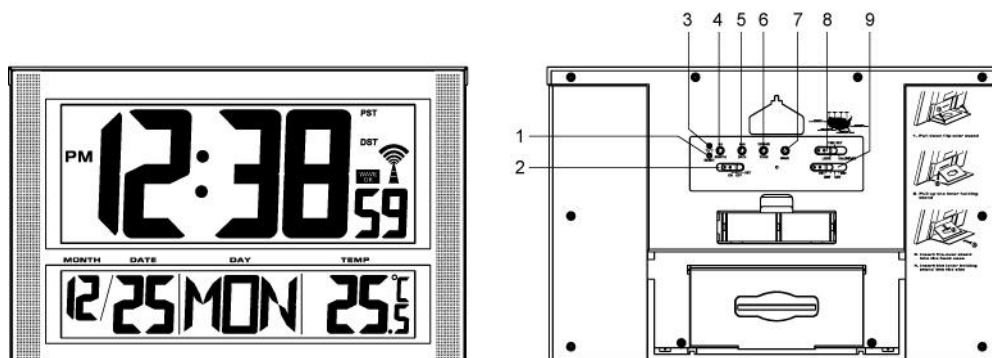
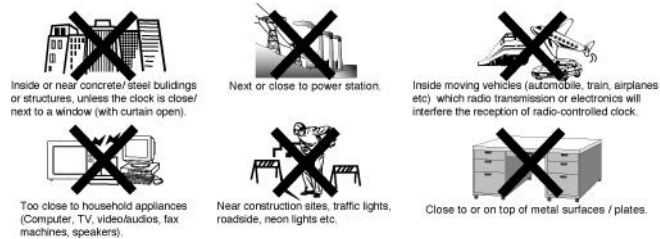
The Jumbo Atomic Wall Clock obtains the accurate time with wireless technology. As with all wireless devices, the receiving ability may be affected by, but not limited to, the following conditions:

- Long transmitting distance.
- Nearby mountains and valleys.
- Among tall buildings.
- Near railway, high voltage cable. etc.

- Near freeway, airport, etc.
- Near construction site.
- Inside concrete buildings.
- Near electrical appliances.
- Bad weather.
- Inside moving vehicles.
- Nearby metal structures.

### Location Precautions

This clock receives a radio wave much like a TV or radio. Be sure to locate it near a window or some other locations where reception is good. Avoid the following locations, which can interfere with proper reception.



### Location of Controls

1. RESET button
2. DST ON / OFF switch

3. °C/°F button
4. HOUR / MONTH button
5. MINUTE / DATE button
6. 12HR / 24HR / YEAR button
7. WAVE button
8. LOCK / TIME SET / CALENDAR switch
9. PST / MST / CST / EST switch

## **Features**

- Receives 60kHz WWVB signal.
- Automatic time and date adjustment after signal reception.
- Calendar with day of the week display.
- Hour, minute and second display.
- 12 or 24-hour format.
- Time accuracy (Radio-Controlled clock): better than 1 second in 3000 years.
- Time accuracy (free run): +/- 60 seconds per month.
- Indoor temperature.
- Centigrade or Fahrenheit readout.
- Clock operating temperature from 32°F to 109°F ( 0°C to 40°C ).
- Temperature measuring range from -58°F to 158°F ( -50°C to 70°C ).
- Temperature resolution 0.1°F ( 0.1°C ).

## **GETTING STARTED**

### **BATTERY INSTALLATION**

- Open the battery compartment cover located on the back of the clock.
- Insert 3 "C" batteries with polarity (+) and (-) as indicated.
- Close the battery compartment cover.
- The low battery icon will show in the indoor temperature window when the batteries need replacement.

### **Radio Controlled Clock Reception**

Your radio controlled clock receives the official time signal from Fort Collins. Successful reception will activate the WAVE OK icon. If the clock fails to receive the "WAVE" signal in the first reception sequence after power up, it will repeat a 10-minute reception sequence every 3 hours. This operation stops once the WAVE is received. The clock automatically refreshes the WAVE each night.

You can start reception of the time signal anytime by pressing the WAVE button.

Note: Frequent use of this feature may affect battery life.

### **Interference**

Signals from other household devices, such as entry controls, door bells and home security systems, may temporarily interfere with the radio controlled clock and cause reception failure. This is normal and does not affect the general performance of the product.

### **Manual Clock Setting**

If 20 minutes after power up your clock has not successfully received the time signal, you may set the clock manually or the clock will continue an automatic search every 3 hours until the signal is received. Best reception of the WAVE is during the nighttime when the atmosphere allows a stronger signal to travel farther from the transmitter. It is strongly recommended that you allow the radio controlled clock one or two evenings to automatically catch the WAVE and set itself.

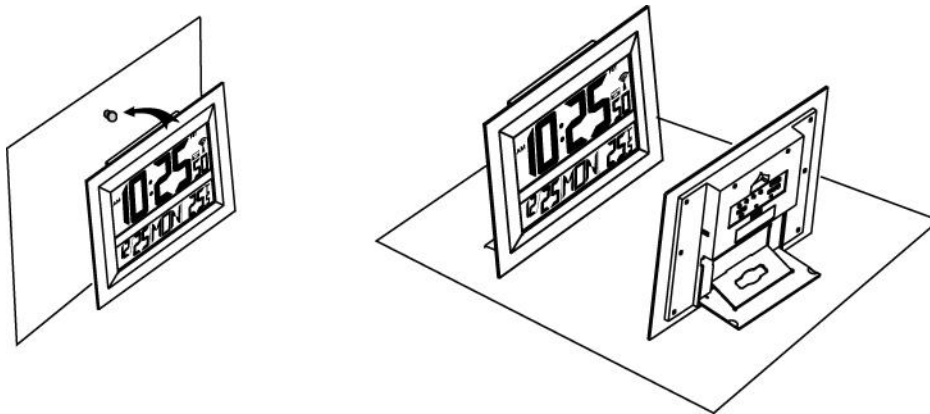
If you decide to manually set the clock, please follow these easy steps:

1. Slide the switch to TIME SET and the time will flash on the display. Press the HR and MIN buttons until you reach the desired time.
2. Slide the switch to calendar and the year and date will flash on the display. Press the YEAR, MONTH and DATE buttons until you reach the desired calendar setting.

3. Slide the Switch to the LOCK Position.
4. Press the 12HR/24HR button to choose the desired display format. "AM" and "PM" display only in the 12HR format.
5. Press the C/F button to choose the Centigrade or Fahrenheit scale.

### **Wall Mounting or Using the Stand**

The clock has a built-in stand you can flip open to support the main unit on a flat surface. You can close the flip and mount the unit on a wall. Drive a screw into the wall until the head extends about 1/8 inch from the wall, then locate the keyhole slot over the screw head and slide the clock down to make it secure.



### **Troubleshooting**

- Press the "Reset" button when the clock is displaying irrelevant time even when the tower icon shows. This may happen when the external noise is severe enough to interfere with the time signal.

### **Care for the Clock**

- Avoid exposing your clock to extreme temperatures, water or severe shock.
- Avoid contact with any corrosive materials such as perfume, alcohol or cleaning agents.
- Do not subject the clock to excessive force, shock, dust, temperature or humidity. Any of these conditions may shorten the life of the clock.
- Do not tamper with any of the internal components of this clock. This will invalidate the warranty and may cause damage.
- Replace the batteries promptly when necessary or store the clock with a battery when not in

use.

- A soft cloth or a paper towel may be used to clean your clock. Do not use any corrosive cleansers or chemical solutions on the clock.

Warning: Changes or modifications to this unit not expressly approved by the party responsible for compliance could void the user's authority to operate the equipment.

#### **Electrostatic Discharge (ESD) Reset Button**

In an environment with electrostatic discharge or with radio frequency interference, the clock may malfunction and may need to be reset. To reset the clock press the <RESET> button on the back of the clock.

#### **Caution**

Danger of explosion if battery is incorrectly replaced. Replace only with the same or equivalent type, please refer to the engraved battery marks inside the battery compartment for the correct battery polarity (+) and (-).